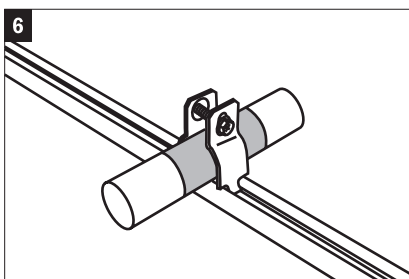
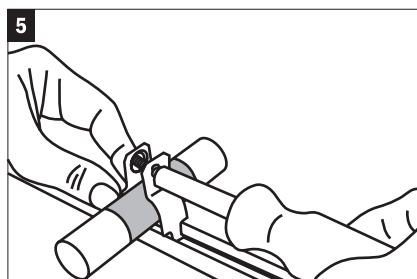
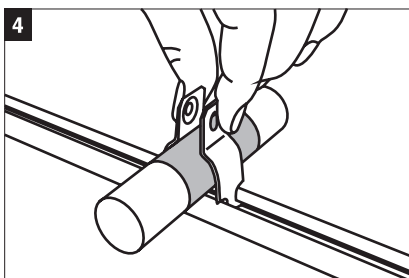
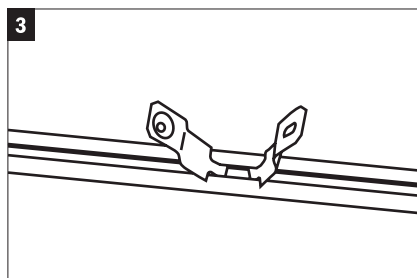
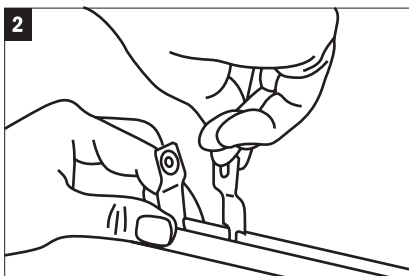
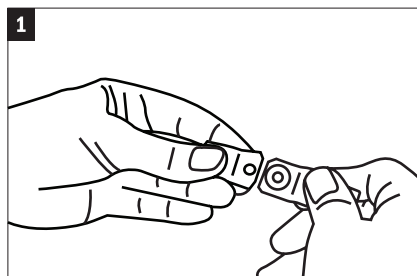
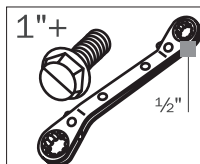
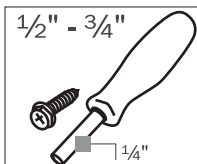
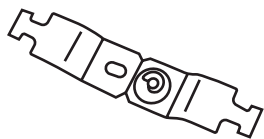


# PowerBar™ Mini Strut Clamp

» Installation Instructions • Instrucciones de instalación Consignes d'installation



14940 Thunderbird Road  
Kansas City, MO 64147  
P 1.800.821.3944  
F 1.800.758.5950

⚠ **WARNING:** Cancer and Reproductive Harm  
⚠ **ADVERTENCIA:** Cáncer y Daños Reproductivos  
⚠ **AVERTISSEMENT:** Cancer et effets néfastes sur la reproduction  
[www.P65Warnings.ca.gov](http://www.P65Warnings.ca.gov)

#IS-523-3MS-MC PBMS MINI CLAMP INSTRUCTION SHEET 5/19

Supply

Drainage

Support

Specialties

[www.siouxchief.com](http://www.siouxchief.com)

TAKE THE FIELD.

