

PDQ™

Ice Maker Installation Kit

Contents:

- (1) 1/2" CTS (5/8" OD) PDQ™ Tee with 1/4" OD Shutoff Valve
- (1) 25' Coil of 1/4" OD PEX Tubing
- (1) 1/4" OD PDQ™ Coupling
- (1) 1/4" OD Brass Compression Nut
- (1) 1/4" OD Plastic Compression Ferrule
- (2) 1/2" Tube Stiffener

Tools Needed:

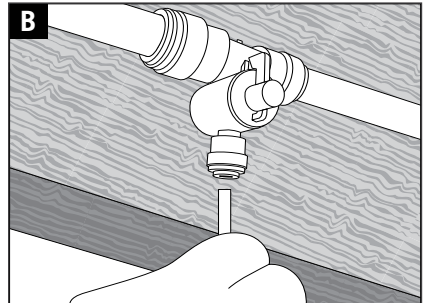
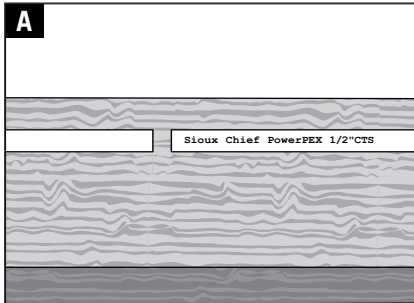
- Tubing Cutter
- Tape Measure
- Drill and 3/8" Drill Bit
- Adjustable Wrench or 1/2" Open End Wrench
- Utility Knife

Valve and Tubing Installation

1. Shut off water supply to cold water line and drain line.
2. With Pipe cutter, remove 1/2" long section of water supply piping. (see image A)
3. Tube ends must have clean, round, smooth cuts. Any jagged or sharp edges must be removed prior to insertion into the tee.
4. Mark 1-1/2" from each end of pipe. This is pipe insertion depth.
5. Hold pipe firmly and push PDQ™ tee with valve to depth line on each pipe end.
6. Drill 3/8" hole through wall or floor.
7. Insert 1/4" OD PEX tubing into valve, push until you feel resistance then push again until tubing bottoms out. (see image B)
8. Push PEX tubing through wall or floor hole.
9. Determine PEX tubing length needed. Cut off excess tubing with utility knife.

Installation to Appliance

1. If there is 1/4" OD tube extending from appliance use the 1/4" OD PDQ™ coupling to attach PEX tubing to appliance.
2. If appliance has 1/4" male compression union, slide nut onto tubing. Slide plastic ferrule onto tubing with tapered end facing appliance. Insert tubing into union until it bottoms out. Slide nut and plastic ferrule into place. Hand tighten, then wrench tighten. Do not overtighten.
3. Turn on water supply and check for leaks.



WARNING: Fittings used in this kit are made from materials that can be compromised by exposure to volatile organic compounds (VOCs) and caustic chemicals. DO NOT expose this product to any such chemical or foreign substance, including exposure to the following: pipe dopes (liquid thread sealants), leak check compounds, bug sprays, lubricants, cleaners, paints, bleaches, acids, solder fluxes, plastic piping primers and cements, oxidizing agents, alkaline solutions, thinners, fuels, oil based caulk, hydrocarbons, spray foam or foaming agents (i.e. insulation). Discard the first few batches of ice or first few gallons of water produced after installation to assure there are no contaminants in the system. (Refer to your appliance manufacturer's instructions.)

*Lead Free: The wetted surface of this product contacted by consumable water contains less than 0.25% of lead by weight.

Instrucciones en español disponibles en www.siouxchief.com/technical/technical-documents
Consignes en français disponibles à www.siouxchief.com/technical/technical-documents

⚠ **WARNING:** Cancer and Reproductive Harm

⚠ **ADVERTENCIA:** Cáncer y Daños Reproductivos

⚠ **ADVERTISSEMENT:** Cancer et effets néfastes sur la reproduction

www.P65Warnings.ca.gov

#IS289-IMK04 5/18

Supply

Drainage

Support

Specialties

www.siouxchief.com

14940 Thunderbird Road
Kansas City, MO 64147
P 1.800.821.3944
F 1.800.758.5950

