

# TRENCH DRAIN

## 865 SERIES

HydroTec™

### SPECIFICATION

Sioux Chief 865 Series HydroTec™ Maxi 200 trench drain shall be used where necessary for surface drainage. Trench drain shall incorporate a fiber-reinforced concrete channel, ductile iron edge rails, and ductile iron, ADA-compliant, grating - all components shall be assembled. Channel shall have a U-shaped flow area and a smooth outer wall to maximize adhesion with concrete encasement and reduce trapped air pockets. Edge rails shall be integrally formed into the channel wall. Concrete thickness and reinforcement shall be per structural engineer's specification for the application. Designed in accordance with ASME A112.6.3

### MATERIALS

**Grating:** Ductile iron (ASTM A536 70-50-05) - ADA-Compliant

**Edge Rails:** Ductile iron (ASTM A536 70-50-05)

**Drain channel:** Fiber-reinforced concrete - neutral profile

Compressive strength: C35/45 (DIN EN 206)

Frost and de-icing salt resistant (DIN EN 1433 Class +R)

Fire Rating: A2 - non-combustible, no smoke, no burning drip (DIN 4102)

Thermal expansion/contraction:  $1 \times 10^{-6}$  mm/Kelvin\*

Maximum water penetration depth: 8 mm (watertight per DIN EN 1433)

### GRATE INTAKE AREA

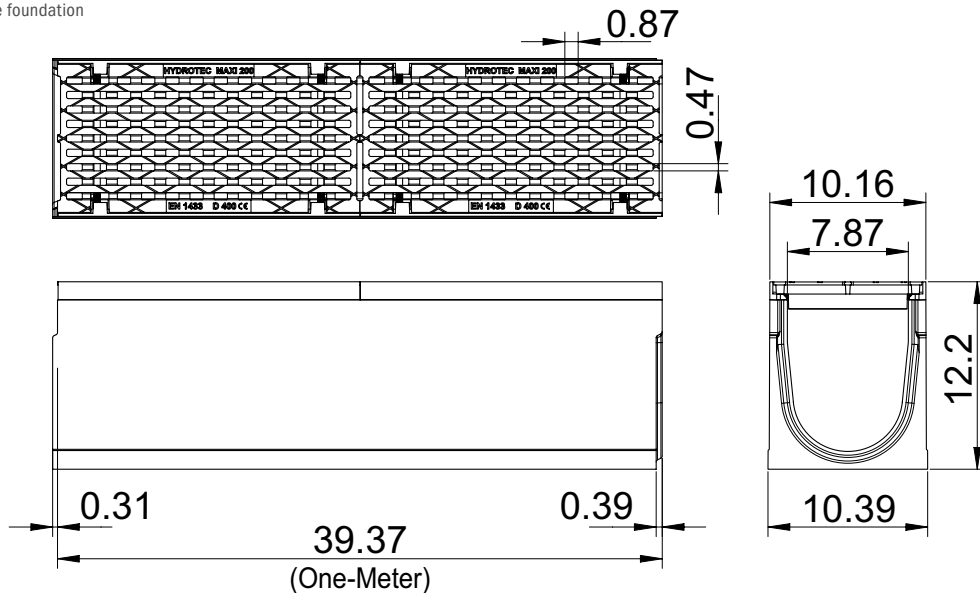
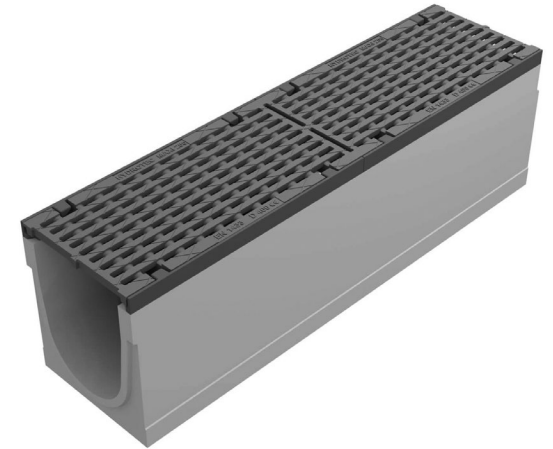
94.5 in<sup>2</sup> / meter

### LOAD RATING

Class D400 / F900 per DIN EN 1433

HS20 / HS25 per AASHTO

\* Same as surrounding concrete foundation



### Specify Item Number

#### CHANNEL

**865-M8N005DA** = Half-Meter section - Class D400 grate

**865-M8N00DA** = One-Meter section - Class D400 grate

**865-M8N005FA** = Half-Meter section - Class F900 grate

**865-M8N00FA** = One-Meter section - Class F900 grate

**865-M8N005F1A** = Half-Meter section - Class F900 grate with 'F1' grate-locking system

**865-M8N00F1A** = One-Meter section - Class F900 grate with 'F1' grate-locking system

#### Accessories - Available Separately:

- 865-M8CBDA: Catch basin with basket - Half-meter - Class D400 grate
- 865-M8N00BDA: Bottom-outlet section - One-meter - Class D400 grate
- 865-M8N005SDA: Side-outlet section - Half-meter - Class D400 grate
- 865-M8CBFA: Catch basin with basket - Half-meter - Class F900 grate
- 865-M8N00BFA: Bottom-outlet section - One-meter - Class F900 grate
- 865-M8N005SFA: Side-outlet section - Half-meter - Class F900 grate
- 865-M8CBF1A: Catch basin with basket - Half-meter - 'F1' Class F900 grate
- 865-M8N00BF1A: Bottom-outlet section - One-meter - 'F1' Class F900 grate
- 865-M8N005SF1A: Side-outlet section - Half-meter - 'F1' Class F900 grate
- 865-8ECD: End cap for Maxi 200 System
- 865-8OCD: End outlet cap (6" Nom.) for Maxi 200 System
- 865-6PC: PVC S&D connection pipe for 6" Nom. outlets
- 865-6RS: Rubber sleeve/seal for 6" Nom. bottom outlets
- 865-TOOL: Grate locking/unlocking tool