

# DOUBLE PLATE-TYPE FIXTURE CARRIER FOR WATER COOLER

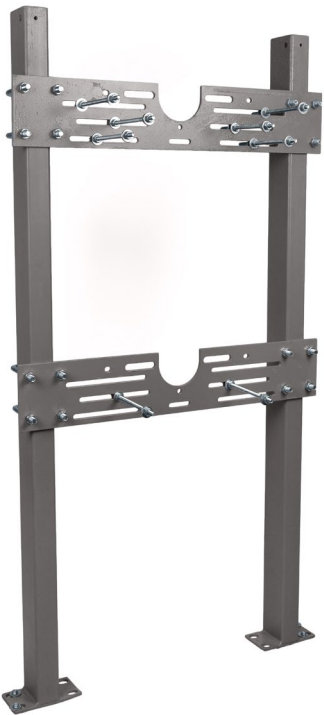
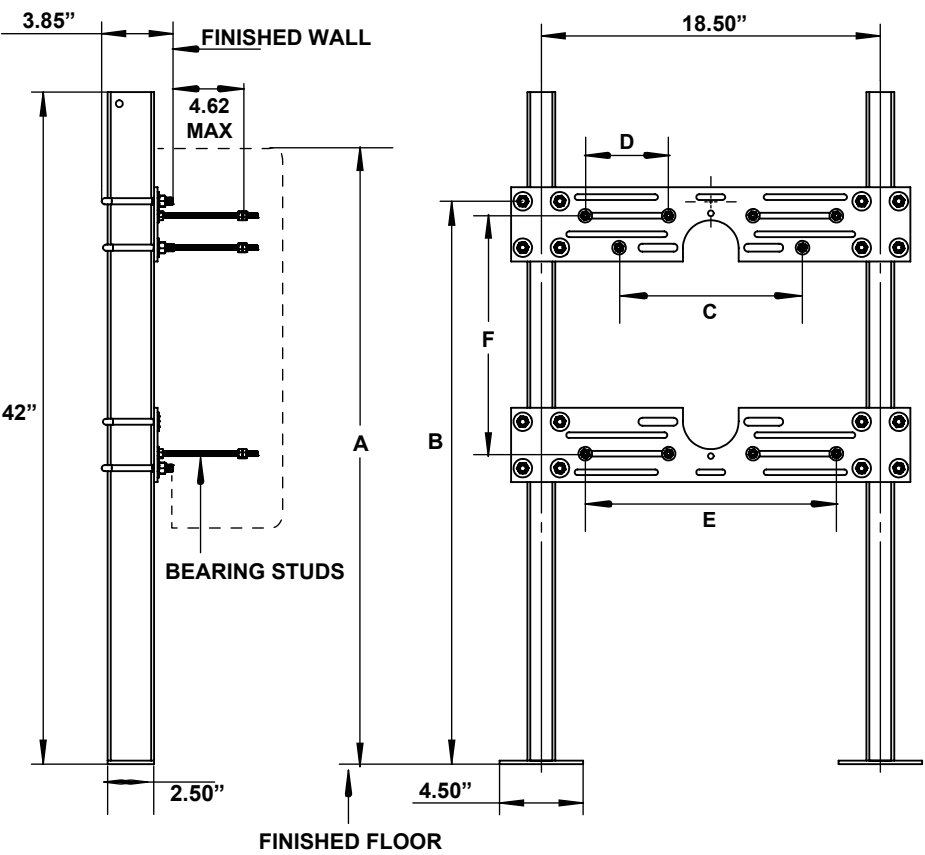
## 837 SERIES

### SPECIFICATION

Sioux Chief 837 Series double plate-type carrier with adjustable top support plate and lower bearing plate. Includes coated rectangular steel uprights with welded feet and mounting hardware. Designed in accordance with ASME A112.6.1M

Used to support wall hung fixtures where the load bearing carrier is concealed within the wall.

ITEM # SUBMITTED	_____
JOB NAME	_____
LOCATION	_____
ENGINEER	_____
CONTRACTOR	_____
PO#	_____ TAG _____



All feet to be secured to floor with 1/2" (min.) bolt and anchors - supplied by others

Fixture Manufacturer		Fixture Name		Fixture No		Size
A	B	C	D	E	F	

Note: The dimensions in this drawing are based on information available. All dimensions should be verified with the fixture manufacturer. We do not accept responsibility for rough-in dimension changes by the fixture manufacturer.

Item Number

837-7DC