

ADJUSTABLE CLEANOUT WITH DECK FLANGE

» 822 SERIES

FinishLine Halo™

SPECIFICATION

Sioux Chief 822 series Halo adjustable cleanout shall be used where necessary in drainage systems. Cleanout shall have a stainless steel deck/mounting flange and coated ductile iron body with no-hub connection. Cleanout shall allow adjustment of 1" after the concrete pour. Scoriated cleanout cover shall meet applicable load requirements for intended use. Cleanout shall include a sealing plug with raised square head situated in base adapter to prevent escape of sewer gas. Designed in accordance with ASME A112.36.2M.

MATERIALS

Ring/cover: Nickel-bronze, 304 Stainless steel
Head adapter: ductile iron
Coring plug: high-impact polymer
Coring sleeve: ductile iron
Deck flange: 19-gauge 430 Stainless steel
Sealing plug: elastomer gasket with polypro drive screw
Base adapter: ductile iron

COVER LOAD RATING

Nickel-Bronze: 2,500 lbs. (medium duty)
Stainless Steel: 3,000 lbs. (medium duty)

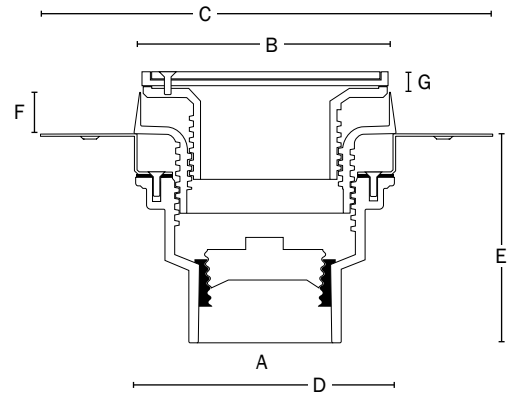
DIMENSIONS

| | |
|------------------------------------|----------------------|
| A: Connection size | 3" No-hub |
| B: Ring/cover diameter | |
| Round Square | 5-1/2" 5-7/8" |
| C: Flange diameter | 9-1/2" |
| D: Base diameter | 5-7/8" |
| E: Base height | 4-3/8" |
| F: Sleeve height | 1" |
| G: Adjustable finish height | |
| Round Square | 0" – 1" 5/16" – 1" |

| | |
|------------------|-----------------|
| ITEM # SUBMITTED | _____ |
| JOB NAME | _____ |
| LOCATION | _____ |
| ENGINEER | _____ |
| CONTRACTOR | _____ |
| PO# | _____ TAG _____ |



822-CF3DNR



Create Item Number

822-AB

e.g. **822-CF3DNRV:** Halo adjustable cleanout - 3" No-Hub connection and round, vandal-resistant nickel-bronze ring/cover

RING/COVER TYPE A

CF3DNR = Round Nickel-bronze
CF3DSR = Round Stainless steel
CF3DNQ = Square Nickel-bronze
CF3DSQ = Square Stainless steel

OPTIONS B

V = Vandal-resistant cover screws
S = Stamping (specify letters)
C = Carpet marker

Accessories - Available Separately:

832-W: Flexible locating bristles kit
 832-S3: Leveling shim kit
 822-EX3: Iron extension adapter - Fits between base and sleeve¹
 832-EX3: Iron extension adapter - Fits between sleeve and head²

¹ Extends sleeve 2" (min) to 3-5/8" (max) above deck flange | ² Extends head 2" (min) to 3-3/4" (max) above sleeve rim