

ADJUSTABLE FLOOR DRAIN WITH DECK FLANGE

» 822 SERIES

FinishLine Halo™

SPECIFICATION

Sioux Chief 822 series Halo adjustable floor drain shall be used where necessary in drainage systems. Floor drain shall have a stainless steel deck/mounting flange and coated ductile iron body with no-hub connection. Floor drain shall allow adjustment of 1" after the concrete pour. Strainer shall meet applicable load requirements for intended use. Trap primer port shall be threaded 1/2" FIP for optional connection. Designed in accordance with ASME A112.6.3.

MATERIALS

Ring/strainer: Nickel-bronze, 304 Stainless steel
Head adapter: ductile iron
Coring plug: high-impact polymer
Coring sleeve: ductile iron
Deck flange: 19-gauge 430 Stainless steel
Base adapter: ductile iron

STRAINER LOAD RATING

Nickel-Bronze (heel-resistant): 1,650 lbs. (light duty)
Stainless Steel (heel-resistant): 2,000 lbs. (light duty)

STRAINER FREE AREA - FLOW RATE

Round: 8.5 in² – 19 GPM¹
Square: 12.75 in² – 21 GPM¹

DIMENSIONS

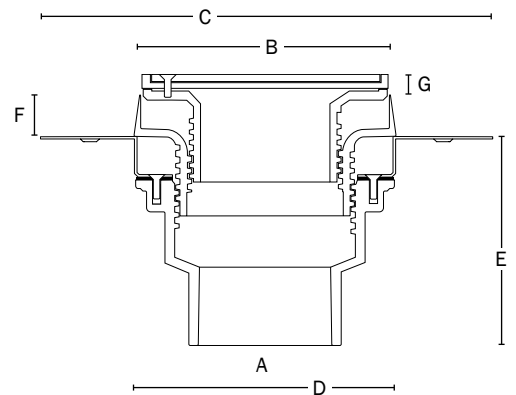
A: Connection size	2", 3" No-hub
B: Ring/strainer diameter	
Round Square	5-1/2" 5-7/8"
C: Flange diameter	9-1/2"
D: Base diameter	5-7/8"
E: Base height	4-3/8"
F: Sleeve height	1"
G: Adjustable finish height ²	
Round Square	0" – 1" 5/16" – 1"

¹ Observed flow rate through strainer, under test conditions, at 0.625" head
² When using optional clamping collar, min dimension is 1/2"

ITEM # SUBMITTED	_____
JOB NAME	_____
LOCATION	_____
ENGINEER	_____
CONTRACTOR	_____
PO#	_____ TAG _____



822-F3DSR



Create Item Number

822-ABCD

e.g. **822-F3DNRV:** Halo adjustable floor drain - 3" No-Hub connection and round, vandal-resistant nickel-bronze ring/strainer

CLAMPING COLLAR A

(no clamping collar is standard)

M = Clamping collar kit³

CONNECTION B

F2D = 2" No-Hub

F3D = 3" No-hub

RING/STRAINER TYPE C

NR = Round Nickel-bronze

SR = Round Stainless steel

NQ = Square Nickel-bronze

SQ = Square Stainless steel

OPTIONS D

V = Vandal-resistant strainer screws

B = Complies with Buy American Act⁴

E = 1-1/4" Extended strainer rim⁴

Accessories - Available Separately:

832-W: Flexible locating bristles kit

832-S3: Leveling shim kit

822-EX3: Iron extension adapter - Fits between base and sleeve⁵

832-EX3: Iron extension adapter - Fits between sleeve and head⁵

835-2: TrapShield™ for 2" drain outlet

835-3: TrapShield™ for 3" drain outlet or head

863-FA: Round aluminum condensate funnel

863-FN: Round nik-brz condensate funnel

³ Clamping collar is 19-gauge 430 stainless steel | ⁴ Available for round nickel-bronze ring/strainers only

⁵ Extends sleeve 2" (min) to 3-5/8" (max) above deck flange | ⁶ Extends head 2" (min) to 3-3/4" (max) above sleeve rim