

CTS FULL CLAMP

» 551 SERIES

PadLock™

SPECIFICATION

Sioux Chief 551 series PadLock™ CTS full tube clamp shall be used where necessary to secure 1/2" or 3/4" CTS supply lines. Clamp shall be approved for use in residential or commercial applications. Clamp shall be corrosion proof and UV resistant and include a rust-resistant fastener for a secure installation. Clamp shall be impact resistant to 0°F, and be able to withstand continuous temperatures up to 160°F. Clamp shall be designed to minimize tube damage if fastener is over-driven. Clamp shall be compatible with copper, PEX or CPVC tube and IAPMO certified.

INSTALLATION

PadLock™ should be installed in alternating directions (so that the screw is on alternating sides of the tube being secured) for secure installation. Install at intervals described in local plumbing code for the type of tube being secured.

MATERIALS

Body: High-density polyethylene

Nail: Zinc-plated steel, ring-shank

Screw: Zinc-plated steel, Phillips/pan head

SAFE WORKING LOAD¹

1/2"	3/4"
12 lbs.	16 lbs.

SAFE WORKING TEMPERATURE

Impact resistant to 0° F (-18° C)

Maximum Temperature: 160° F (71° C)

DIMENSIONS

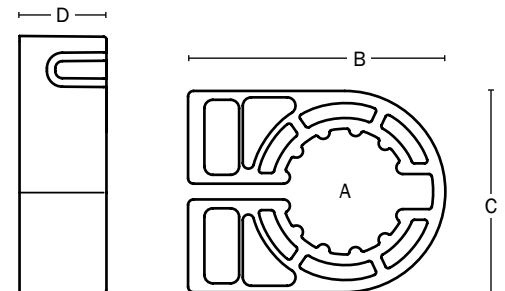
	1/2"	3/4"
A: Nom. Tube size	1/2" CTS	3/4" CTS
B: Overall length	1.00"	1.38"
C: Overall height	1.13"	1.50"
D: Width	0.38"	0.44"
Nail length	2.13"	2.13"
Screw length	1.75"	2"

¹ Safe working load = Failure load x 0.50

ITEM # SUBMITTED	_____
JOB NAME	_____
LOCATION	_____
ENGINEER	_____
CONTRACTOR	_____
PO#	_____ TAG _____



551-P2



Create Item Number

551-A

e.g. **551-P2:** PadLock full tube clamp with nail for 1/2" CTS tube

NOMINAL SIZE / FASTENER **A**

P2 = 1/2" CTS with Nail

P3 = 3/4" CTS with Nail

P2S = 1/2" CTS with screw

P3S = 3/4" CTS with screw