

BEND SUPPORT BRACKETING SYSTEM

» 521 SERIES

SnapBack™

SPECIFICATION

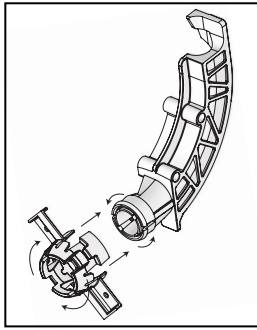
Sioux Chief's SnapBack bend support bracketing system shall be used for stubbing out or up when penetrating a wall/floor with 1/2" PEX tube. System shall include a tubing bend support and mounting face (grommet). System is designed to snap into a 1-11/32" hole in flat bracket, or punched metal stud. Grommet shall include integral top/bottom tracks, which can be used to attach system to narrow utility brackets (hyco bars), allowing installer to secure stub out at any location within the stud cavity. Bend support elbow shall swivel freely once grommet is snapped in place to accommodate tubing run from any direction. Designed in accordance with IAPMO PS 42-2022.

MATERIALS

Grommet: ABS

Bend Support: ABS

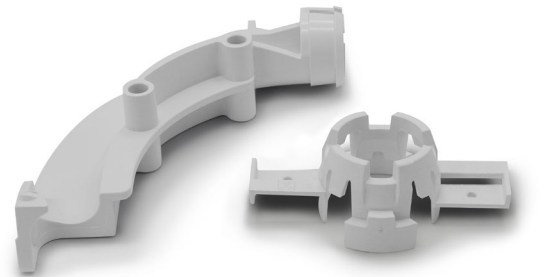
INSTALLATION



For installations on flat bracket with 1-11/32" holes: Insert the tip of bend support into grommet. Holding the grommet tightly by the tip (not by the 'wings'), **SNAP** the bend support and grommet together while twisting support and grommet in opposite directions. Push 1/2" PEX through grommet from backside and gently bend tube into bend support until it snaps in place. Be careful not to kink PEX tube. Load SnapBack and tube assembly into desired hole of the flat bracket. Push grommet into flat bracket until it **SNAPS**. Mount bracket to stud or building member.

See installation instructions for alternative installations

ITEM # SUBMITTED	_____
JOB NAME	_____
LOCATION	_____
ENGINEER	_____
CONTRACTOR	_____
PO#	_____ TAG _____



521-3SBP2

SAFE WORKING LOAD

25 lbs. @ 140° F

A measure of the force needed to push a properly loaded grommet backwards out of a 521 Series flat bracket

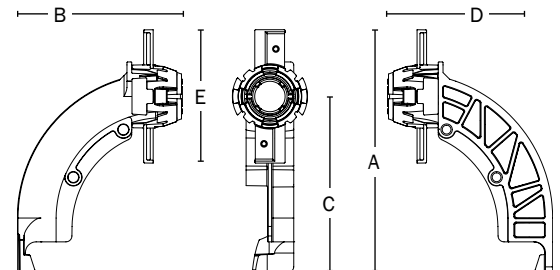
DIMENSIONS

A: Overall height	5.25"
B: Overall width	3.5"
C: Bottom to tube center	3.75"
D: End to tube center	3.0"
E: Grommet track width	2.75"

1 Max height noted with flashing collar inverted. Add 3/8" for Push-Joint connection



© Made in the USA



Item Number

521-3SBP2

Accessories - Available Separately:

- 521-318: 2" x 20" galvanized flat bracket with grommet openings
- 521-360: 2" x 26" galvanized flat bracket with grommet openings
- 521-3725B: 3" x 4" galvanized 'L' bracket with grommet openings
- 521-557: Galvanized suspension bracket with ONE grommet opening
- 521-558: Galvanized suspension bracket with TWO grommet opening
- 521-559: Galvanized suspension bracket with FOUR grommet opening
- 525-6918: 5/8" x 18" galvanized (hyco) support bracket
- 525-6920: 5/8" x 20" galvanized (hyco) support bracket
- 525-6926: 5/8" x 26" galvanized (hyco) support bracket
- 525-P2M: 3-3/4" x 4-1/4" galvanized mounting plate