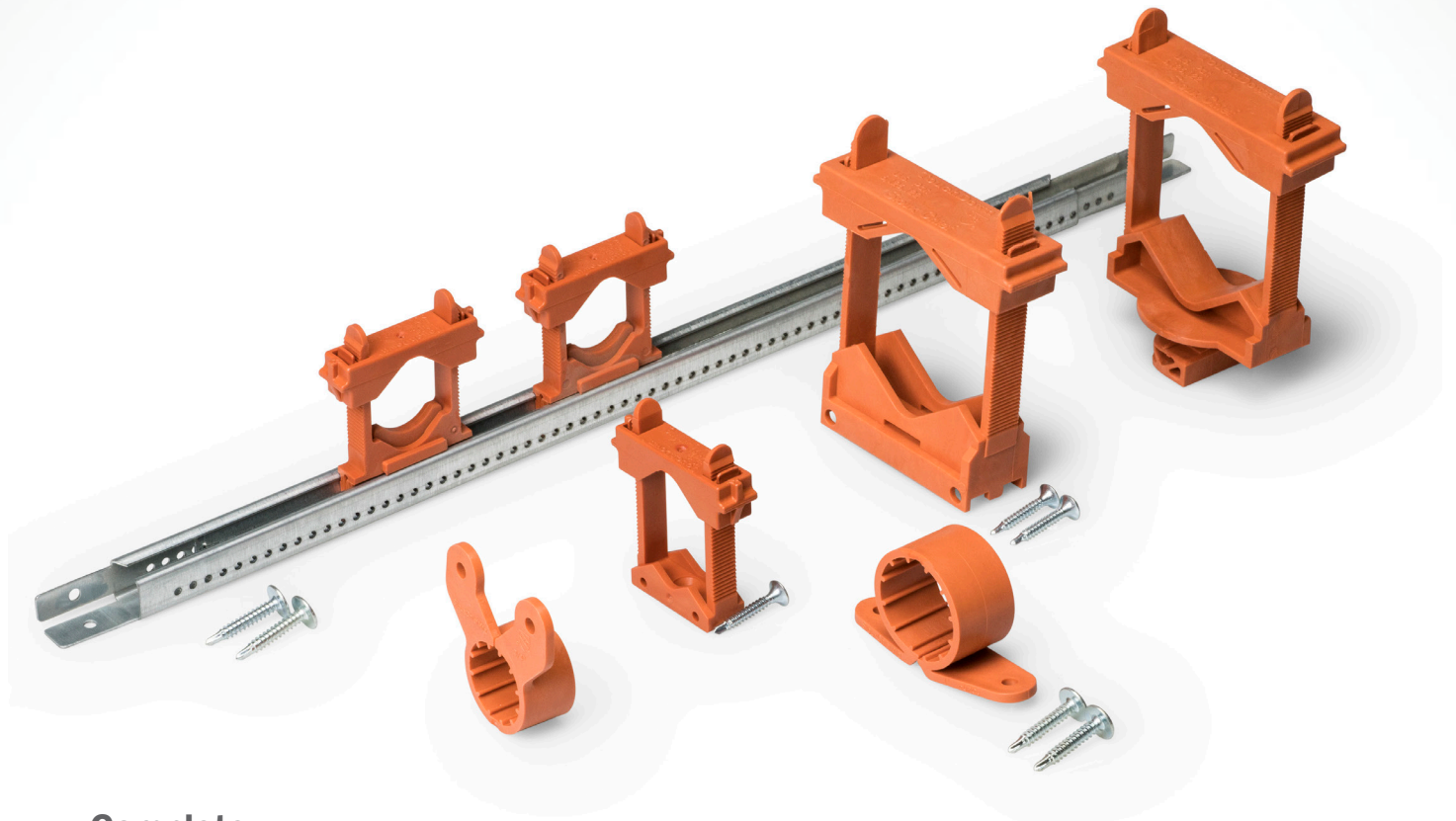


# PlenumSafe™

▶▶ E84 Clamps, Hangers & Pipe Supports



## Complete

A variety of sizes and models means the right pipe clamp or hanger for any return air plenum application.

## Non-Corrosive

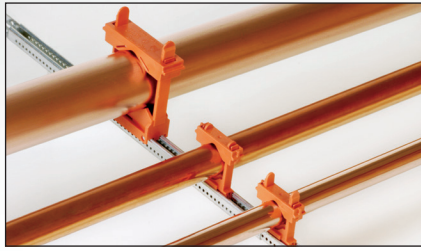
Non-metallic polyvinylidene fluoride (PVDF) material eliminates all worries about rust or dissimilar metals.

## Compliant

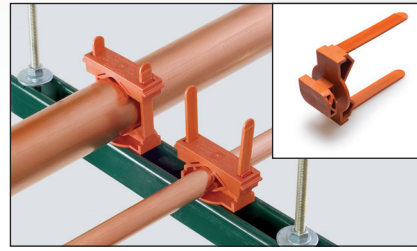
Meets the ASTM E84 25/50 flame spread and smoke opacity rating, as well as the UL94 V-0 flame rating.

Meets International Mechanical Code (IMC) Section 602: Plenums

Meets Uniform Mechanical Code (UMC) Section 602.2: Combustibles Within Ducts & Plenums.



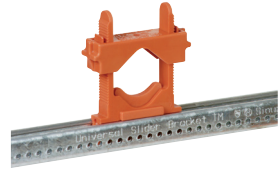




E84 TouchDown clamps and TouchDown II clamps fit PowerBar and PowerBar Mini Strut brackets. The releasable locking mechanism allows for variable clamping tension for expansion and contraction. Clamping ranges are ½" – 2" CTS or ¾" – 2" IPS (Schedule 40).



E84 TouchDown II strut clamp fits either 1½" or 2½" channel strut. Simply insert the foot into the channel and twist. Clamping ranges are ½" – 2" CTS or ¾" – 2" IPS (Schedule 40).

## »» Buying Information

ITEM NO.	DESCRIPTION	U/M	PKG	MIN QTY	CASE QTY	
<b>Suspension Clamp</b>						
	557F2	E84 ½" CTS Suspension Clamp	EA	B	100	1000
	557F3	E84 ¾" CTS Suspension Clamp	EA	B	50	500
	557F4	E84 1" CTS Suspension Clamp	EA	B	50	500
	557F5	E84 1¼" CTS Suspension Clamp	EA	B	10	10
	557F6	E84 1½" CTS Suspension Clamp	EA	B	10	10
	557F7	E84 2" CTS Suspension Clamp	EA	B	10	10
	<b>Tube Clamp</b>					
	559F2	E84 ½" CTS Tube Clamp	EA	B	100	1000
	559F3	E84 ¾" CTS Tube Clamp	EA	B	50	500
	559F4	E84 1" CTS Tube Clamp	EA	B	50	500
	559F5	E84 1¼" CTS Tube Clamp	EA	B	10	10
	559F6	E84 1½" CTS Tube Clamp	EA	B	10	10
	559F7	E84 2" CTS Tube Clamp	EA	B	10	10
	<b>PowerBar Universal Bracket</b>					
	523F2424	(1) Bracket, (2) E84 TouchDown Clamps, (4) #8 Self-Drilling Pan Head Phillips Screws	EA	B	50	50
	523F5500	E84 TouchDown Clamps: (100) Bases, (100) Bridges, (100) Screws - Bulk	EA	B	100	100
<b>TouchDown Clamp</b>						
	550F11	E84 TouchDown Clamp: (1) Bridge, (1) Base, (1) #6 Self-Drilling Bugle Head Phillips Screws - Bagged	EA	B	100	100
<b>TouchDown II Clamp</b>						
	550F20	E84 TouchDown II: (1) Bridge, (1) Base, (2) #6 Self-Drilling Bugle Head Phillips Screws - Bagged	EA	B	25	25
	550F2T	E84 TouchDown II: Strut Clamp - Bagged	EA	B	5	5
	550F22T	E84 TouchDown II Strut Clamp 50/box - Bulk	BX	B	1	1

### Material Specifications

Polyvinylidene Fluoride (PVDF)  
 Maximum Temperature: 140°F (60°C) continuous  
 Maximum Suspended Load Rating: 25-lbs.  
 TouchDown Clamp Range: 0.375" – 1.315"  
 TouchDown II Clamp Range: 0.625" – 2.375"

