

StopOut™

Under-Sink Stub Out & Stop Kit



Install Valves at Rough

Install floor-mounted stops at rough – Save Time and Touches!

The StopOut anchors and protects the installation during construction.

Convenient

Perfect for kitchen islands or sinks on external walls where supply lines pop up through the floor.

Stub out length is designed to work with most cabinet floors with no cutting needed.

Protect stub out and stop valve during construction with durable, high-vis debris covers, included.



Supply

Drainage

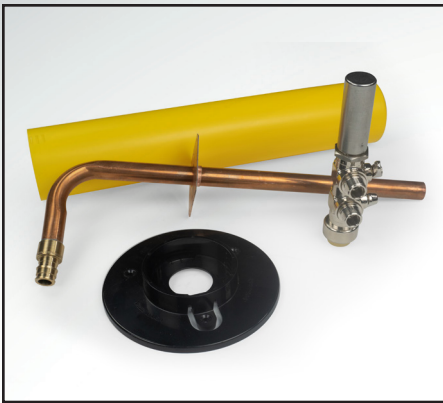
Support

Specialties

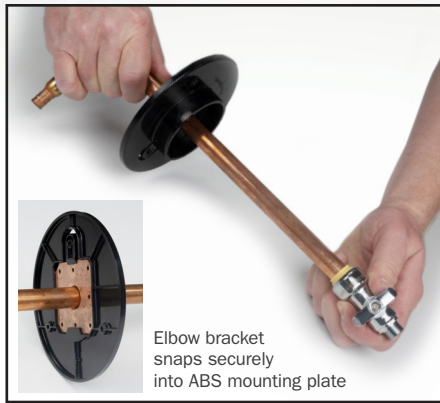
www.siouxchief.com

TAKE THE FIELD.





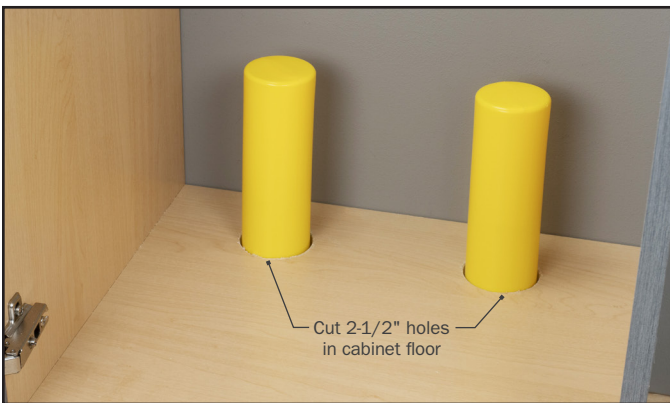
The StopOut kit includes: ABS mounting plate, copper stub out elbow with plate bracket, 1/4-Turn push-fit valve, and durable debris cover



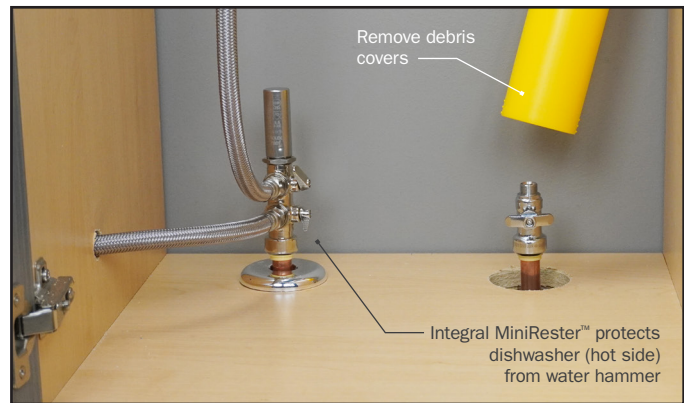
Attach the copper elbow to the mounting plate. Then connect valve to the end of the stub out - Be sure valve is OFF.



Measure for location/centers and drill 1" holes in sub floor. Insert elbows and fasten plates with three screws. Cover stub out and valve with debris cover



Be sure valves are OFF and make the water supply connection to the copper elbow below the sub floor. Pressure test and check for leaks. Cut holes in cabinet floor and lower in place over StopOut debris covers.



Remove debris covers and connect supply lines. Arrester models are perfect for sink and dishwasher on hot side, or sink and ice maker on the cold side.



689XG211



689WG11



689WG201

» Buying Information

ITEM NO.	STOP VALVE OUTLET	DESCRIPTION	MIN. QTY.	CASE QTY.
F1807 CONNECTION				
689XG11	(1) 3/8" Compression	1/2" F1807 elbow, floor bracket, debris cover, and stop valve	10	10
689XG201	(1) 1/4", (1) 3/8" Comp. with Arrester	1/2" F1807 elbow, floor bracket, debris cover, and stop valve	10	10
689XG211	(2) 3/8" Compression with Arrester	1/2" F1807 elbow, floor bracket, debris cover, and stop valve	10	10
F1960 CONNECTION				
689WG11	(1) 3/8" Compression	1/2" F1960 elbow, floor bracket, debris cover, and stop valve	10	10
689WG201	(1) 1/4", (1) 3/8" Comp. with Arrester	1/2" F1960 elbow, floor bracket, debris cover, and stop valve	10	10
689WG211	(2) 3/8" Compression with Arrester	1/2" F1960 elbow, floor bracket, debris cover, and stop valve	10	10