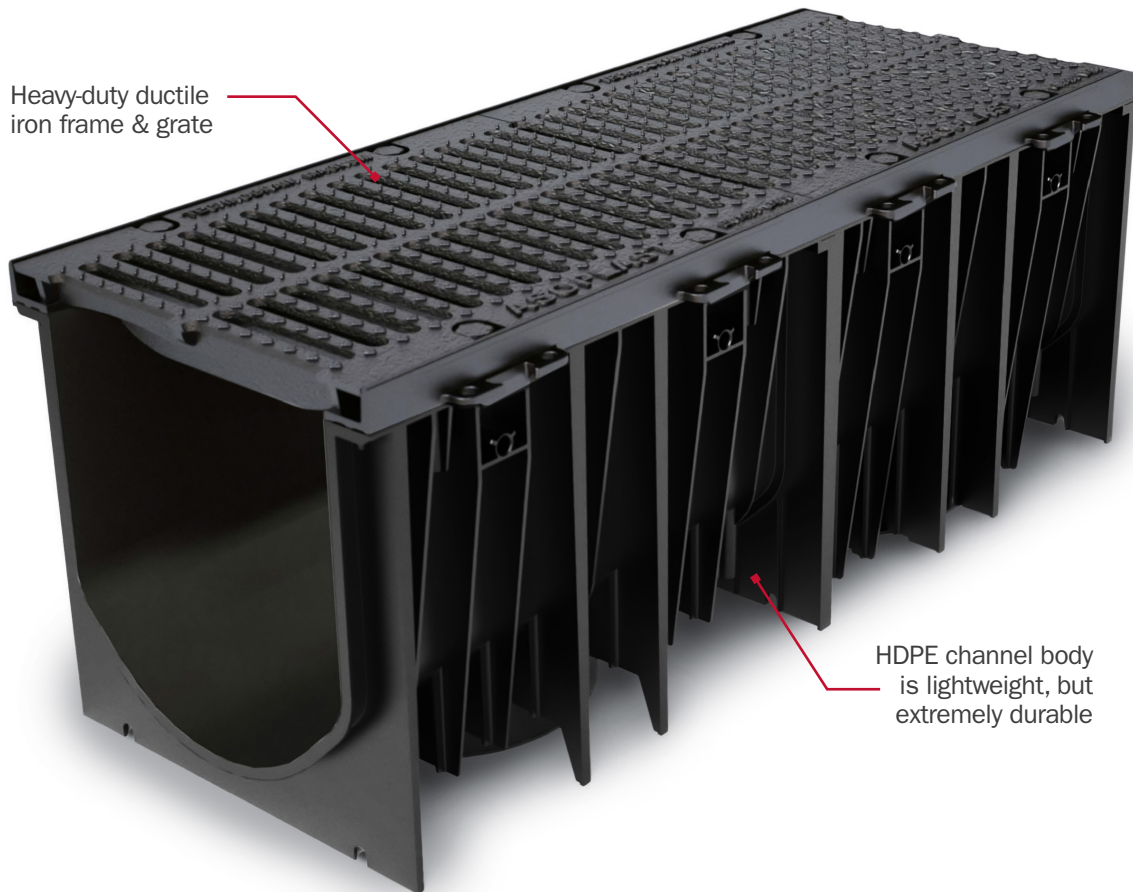


Fast Track™

Large-Capacity Trench Drain System



Heavy-duty ductile iron frame & grate

HDPE channel body is lightweight, but extremely durable

Large Capacity

Suitable for large catchment areas or areas with higher expected inflow rates.

Versatile

Tough, lightweight, HDPE channels interlock easily with no hardware needed.

Ductile iron frame/grate for heavy-duty traffic applications. Integral bottom outlets



Rigid channels with interlocking joints and structural ribs help keep runs straight

Supply

Drainage

Support

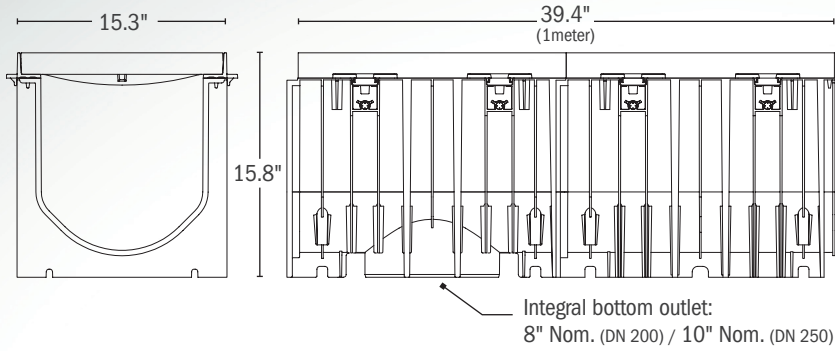
Specialties

www.siouxchief.com

TAKE THE FIELD.



Dimensions



System Notes

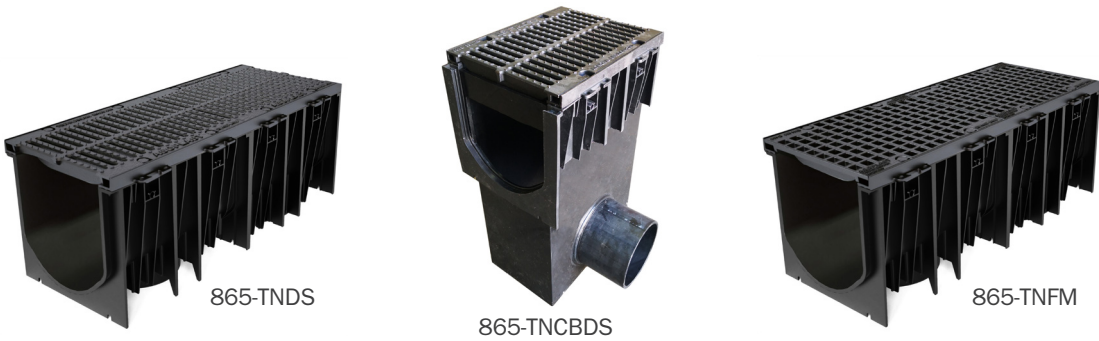
- The FastTrack system is designed for on-grade installations only
- Always install expansion joints on both sides of, and parallel to the channel, per specifications
- FastTrack systems require full concrete encasement on three sides, regardless of surface material/finish
- Slab should be sloped toward the channel on both sides to promote proper drainage
- Grate level should be set ~3/16" below finished slab level



Lightweight, one-meter channel sections are relatively easy to handle, move, and set in place. Ductile iron frame/grate makes the system suitable for heavy-duty applications.



Grate frames include side anchor tabs. Tabs lock frames into the surrounding slab and work with 3/8" rebar to prevent movement before and during the slab pour.



Buying Information

ITEM NO.	DESCRIPTION	MIN. QTY.	CASE QTY.
FastTrack Channel & Grate Units			
865-TNDS	One-meter channel section with integral bottom outlet. Ductile iron frame and Class D slotted grate	1	1
865-TNFM	One-meter channel section with integral bottom outlet. Ductile iron frame and Class F mesh grate	1	1
Accessories			
865-TNCBDS	Half-meter, end-line catch basin with ductile iron frame and Class D slotted grate - 10" Nom. (DIN 250) HDPE pipe outlet	1	1
865-TNCBFM	Half-meter, end-line catch basin with ductile iron frame and Class F mesh grate - 10" Nom. (DIN 250) HDPE pipe outlet	1	1
865-TNB	Removable stainless steel debris basket for catch basin	1	1
865-TEC	End cap for channel or catch basin	1	1
865-TEO	End outlet for channel - 8" Nom. (DIN 200) HDPE pipe outlet	1	1

Grate load class per DIN EN1433

www.siouxchief.com

#LT2-FASTTRACKLC

14940 Thunderbird Road
 Kansas City, MO 64147
P 1.800.821.3944
F 1.800.758.5950

