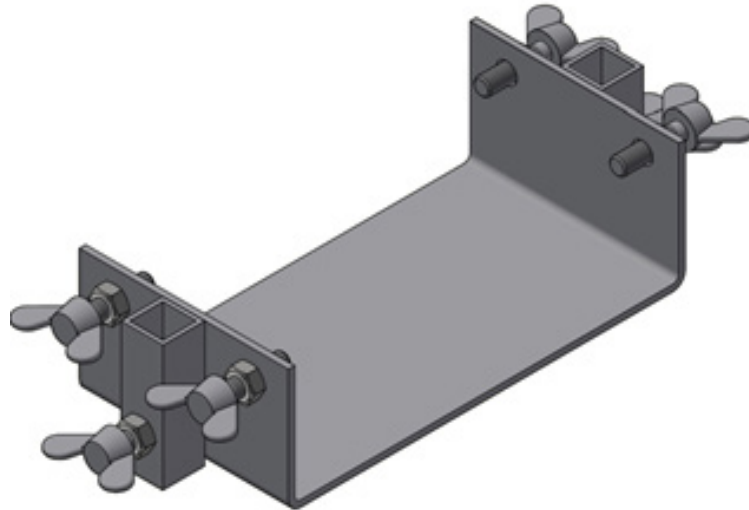


Installation Bracket for Trench Drains



Strong

Heavy-duty, 11-gauge steel U-channel can be used anywhere along a channel run – including under joints

Simple

Easy-turn, galvanized screws hold channels in place and provide some lateral adjustment where needed

Adjustable

Side sockets accept 1/2" re-bar (not included) and allow bracket to adjust to correct height before locking in place with screws



»» Buying Information

ITEM NO.	DESCRIPTION	PKG	MIN. QTY.	CASE QTY.
RE-BAR BRACKET FOR MAXI CHANNELS				
865-4BK	Steel Installation Bracket for Maxi/Top 100 channels	B	1	1
865-6BK	Steel Installation Bracket for Maxi 150 channels	B	1	1
865-8BK	Steel Installation Bracket for Maxi 200 channels	B	1	1