

Sioux Chief

MANUFACTURING SINCE 1957



Trench Drains
Product Catalog
Edition 32.8

Effective: June 10, 2024
Prices Supersede All Previous Editions



Sioux Chief is an American Manufacturer

Sioux Chief is a leading American manufacturer of rough plumbing products located in Kansas City, Missouri. We develop and manufacture some of the most diverse and innovative plumbing products in the country.

We focus on product innovation initiated by field research and interviews with plumbers, engineers, code officials and distributors. We're able to turn ideas into products quickly because we design and build our own machines. This also allows us to control manufacturing costs and minimize down-time, providing consistent, reliable value to our customers.

Our primary purpose as an American manufacturer is to provide better value to the professional plumbing and mechanical contractor by offering top-quality, innovative products with superior customer service. Our goal as an American innovator, is to make plumbing installation easier, more effective, and more efficient.

We strive every day to meet the demands of the rough plumbing industry with innovation, quality, and the American spirit.

Trench Drain Catalog

Edition 32.8

FastTrack™ System

Pre-Sloped System	387 - 388
Large-Capacity System	388

HydroTec™ System

Maxi 100	391 - 392
Maxi 150	393 - 394
Maxi 200	395
Maxi 300	396
Maxi 400	396
Top 100	397 - 399

HydroBlock™ System

HydroBlock 100	403
HydroBlock 150	403
HydroBlock 200	403 - 404
HydroBlock 300	404

HydroLine™ System

HydroLine	407
-----------	-----



Making it in America – Since 1957

American manufacturing generates almost 11% of the U.S. gross domestic product. It accounts for 60% of our exports and employs nearly 12 million people. 70% of U.S. dollars spent on research and development come from the manufacturing sector.

Sioux Chief manufactures more than 90% of the products we sell, employing more than 500 American workers in the process. We design, build and maintain all of our own copper tube forming tools, machines, plastic injection molds, packaging, cleaning and testing equipment as we produce the highest quality American-made plumbing parts.

Buy American when you can. We all succeed when you do!

Trench Drains

FastTrack™ System

HydroTec™ System

HydroBlock™ System

HydroLine™ System

Trench Drains

FastTrack™ System

Sloped and neutral channels made from engineered high-density polyethylene. DIN EN load ratings from A15 to D400. Designed in accordance with ASME A112.6.3 Standard for Floor and Trench Drains.

HydroTec™ System

Sloped and neutral channels constructed from reinforced concrete with integral edge rails. DIN EN load ratings up to F900. Designed in accordance with ASME A112.6.3 Standard for Floor and Trench Drains.

HydroBlock™ System

One-piece ductile iron channel and grate system designed for heavy loads and high-traffic areas. DIN EN load rating up to F900.

HydroLine™ System

Low-profile, one-piece channels made from ductile iron or aluminum lock into concrete slab for heavy-duty traffic. DIN EN load rating up to F900

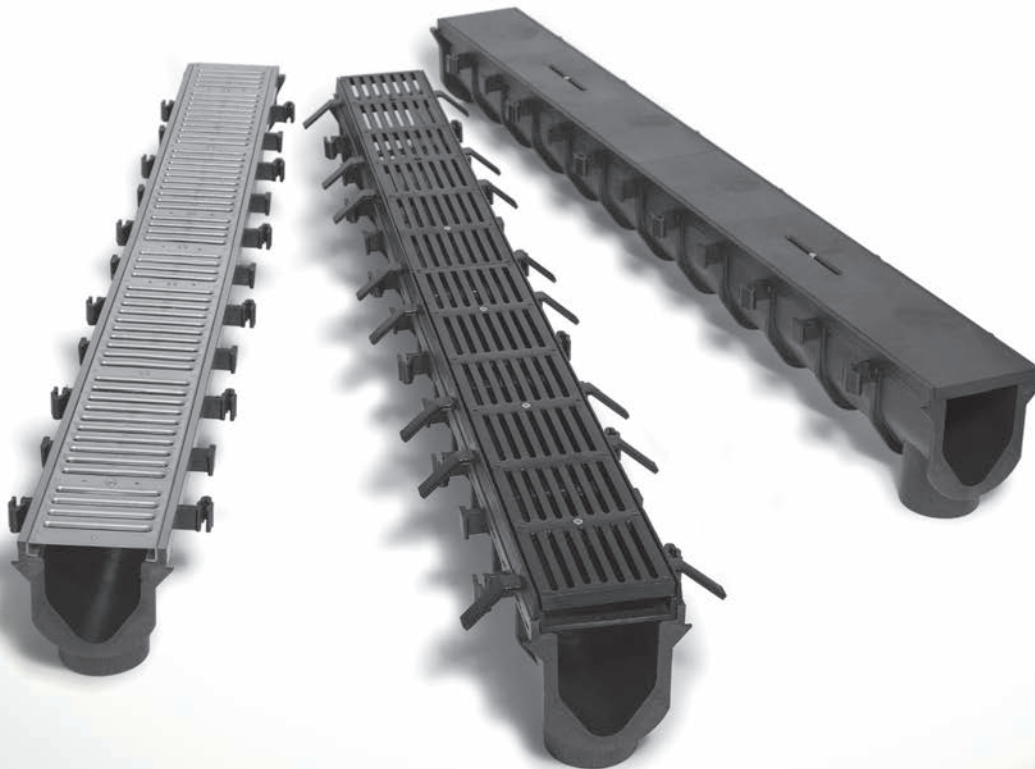
FastTrack™ System

Pre-Sloped System

Large-Capacity System

FastTrack™ channels are tough, lightweight, and chemical-resistant. Channels include integral rebar clips, grate anchors and bottom outlet.

Multiple grate options available for applications from pedestrian traffic to heavy-duty loads.





FastTrack™ Pre-Sloped System

Item Number	Item Description	Pkg Type	Min Qty	Case Qty	Price
CHANNELS					
865-N3	Neutral Channel w/ Construction Cover - 72" Long	B	1	1	\$260.92
865-N5	Neutral Channel w/ Construction Cover- 72" Long	B	1	1	\$260.92
865-N7	Neutral Channel w/ Construction Cover- 72" Long	B	1	1	\$260.92
865-N9	Neutral Channel w/ Construction Cover- 72" Long	B	1	1	\$260.92
865-S1	Sloped Channel w/ Construction Cover- 72" Long	B	1	1	\$260.92
865-S2	Sloped Channel w/ Construction Cover- 72" Long	B	1	1	\$260.92
865-S3	Sloped Channel w/ Construction Cover- 72" Long	B	1	1	\$260.92
865-S4	Sloped Channel w/ Construction Cover- 72" Long	B	1	1	\$260.92
865-S5	Sloped Channel w/ Construction Cover- 72" Long	B	1	1	\$260.92
865-S6	Sloped Channel w/ Construction Cover- 72" Long	B	1	1	\$260.92
865-S7	Sloped Channel w/ Construction Cover- 72" Long	B	1	1	\$260.92
865-S8	Sloped Channel w/ Construction Cover- 72" Long	B	1	1	\$260.92
865-S9	Sloped Channel w/ Construction Cover- 72" Long	B	1	1	\$260.92
DUCTILE IRON GRATES					
865-GIC	Cross-Slot Ductile Iron Grate w/ Screws - Class C - 36" Long	BI	1	1	\$271.72
865-GID	Diagonal-Slot Ductile Iron Grate w/ Screws - Class C - 36" Long	BI	1	1	\$271.72
865-GIS	Slotted Ductile Iron Grate w/ Screws - Class D - 36" Long	BI	1	1	\$257.02
STAINLESS STEEL GRATES					
865-GSA	Angle-Slot Grate w/ Screws - Class A - 36" Long	BI	1	1	\$220.31
865-GSB	Brick Slot Stainless Steel Grate w/ Screws - Class C - 36" Long	BI	1	2	\$547.51
865-GSBC	Stainless Steel Access Section for Brick Slot Grate - Class C - 12" Long	B	1	1	\$778.00
865-GSD	Perforated Stainless Steel Grate w/ Screws - Class A - 36" Long	BI	1	1	\$227.66
865-GSS	Slotted Stainless Steel Grate w/ Screws - Class A - 36" Long	BI	1	1	\$223.64
865-GSSR	Reinforced Slotted Stainless Steel Grate w/ Screws - Class C - 36" Long	BI	1	1	\$316.16
GALVANIZED STEEL GRATES					
865-GGD	Perforated Galvanized Steel Grate w/ Screws - Class A - 36" Long	BI	1	1	\$198.29
865-GGS	Slotted Galvanized Steel Grate w/ Screws - Class A - 36" Long	BI	1	1	\$175.63
865-GGSR	Reinforced Slotted Galvanized Steel Grate w/ Screws - Class C - 36" Long	BI	1	1	\$259.92
POLYMER GRATES					
865-GHC	Cross-Slot GFPP Grate w/ Screws - Class A - 36" Long	BI	1	1	\$169.98
865-GHS	Slotted HDPE Grate w/ Screws - Class A - 36" Long	BI	1	2	\$146.87



865-S3



865-GIS



865-GSA



865-GGS



865-GHC

Supply

Drainage

Support

Specialties

Appendix

Supply

Drainage

Support

Specialties

Appendix

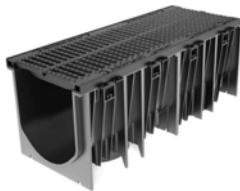


865-F

FastTrack™ Pre-Sloped System (Cont)

Item Number	Item Description	Pkg Type	Min Qty	Case Qty	Price
ACCESSORIES					
865-A	Grate Anchor - Stainless – Fits All Channels	B	1	20	\$6.54
865-C	Construction Cover - HDPE 36" Long - Fits All FastTrack Channels	B	1	1	\$16.73
865-CB4	4" Outlet Adapter for Catch Basin - Fits 3" & 4" Sch. 40, 4" SDR35 pipe	BI	1	1	\$42.40
865-CB6	6" Outlet Adapter for Catch Basin - Fits 6" SDR35 pipe	BI	1	1	\$42.40
865-D	Dome Bottom Strainer - Stainless Steel – For Bottom Outlet	BI	1	1	\$36.85
865-EC	End Cap - HDPE Flat Cap – Fits All Channels	BI	1	50	\$29.79
865-EG	SS Edge Guards w/Screws, 36" Long, 2/Box	BI	1	1	\$119.07
865-EO	End Outlet - HDPE w/ 4" No-Hub Connection	BI	1	25	\$29.79
865-F	Ductile Iron Grate Frame - 36" Long w/ Screws	BI	1	1	\$168.90
865-FB	Debris Basket - Fits FastTrack Catch Basin	BI	1	1	\$268.18
865-FC	Catch Basin - 36" Long - Fits All FastTrack Channels	BI	1	1	\$283.02
865-FCB	Catch Basin w/Basket - 36" Long - Fits All FastTrack Channels	BI	1	1	\$551.20
865-S15	Screws For FastTrack Grate, 1-1/2", 3/Bag	BI	1	100	\$5.41

FastTrack™ Large-Capacity System



865-TNDS



865-TNCBDS

Item Number	Item Description	Pkg Type	Min Qty	Case Qty	Price
CHANNEL & GRATE UNITS					
865-TNDS	Neutral Channel Section w/ Slotted Class D Grate - One-Meter Long	B	1	1	\$756.00
865-TNFM	Neutral Channel Section w/ Mesh Class F Grate - One-Meter Long	B	1	1	\$1,045.00
ACCESSORIES					
865-TEC	End Cap - PVC flat cap	B	1	1	\$44.45
865-TEO	End Outlet - PVC with 8" Connection	B	1	1	\$110.00
865-TNB	Removable Debris Basket for Catch Basin - Stainless Steel	B	1	1	\$496.00
865-TNCBDS	Catch Basin w/ Slotted Class D Grate - Half-Meter Long	B	1	1	\$1,789.00
865-TNCBFM	Catch Basin w/ Mesh Class F Grate - Half-Meter Long	B	1	1	\$1,937.00

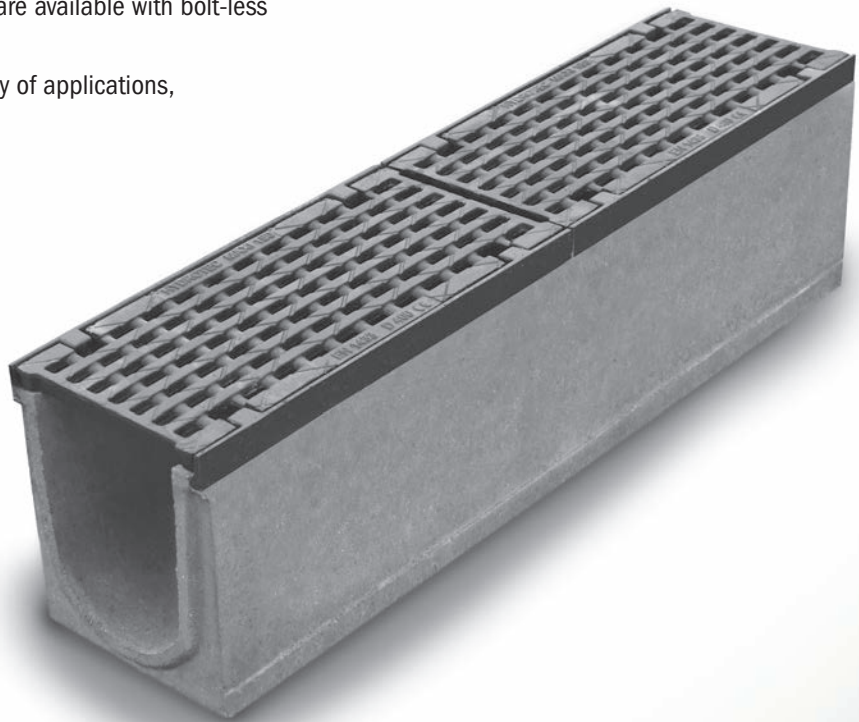
HydroTec™ System

HydroTec™ Maxi

HydroTec™ Top

HydroTec™ trench drain systems are constructed from fiber-reinforced concrete channels with integral ductile iron (Maxi system) or galvanized steel (Top system) edge rails. Grates are available with bolt-less locking feature or 'F1' locking option.

Highly stable and suitable for a variety of applications, with load ratings up to F900.





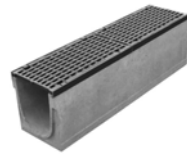
865-M4N10
Page 391



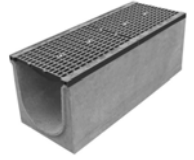
865-M6S01DA
Page 393



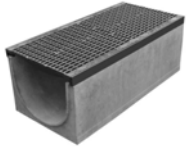
865-M6S01FA
Page 394



865-M8N00DA
Page 395






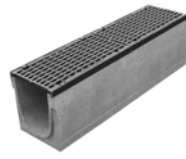
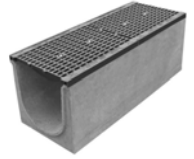
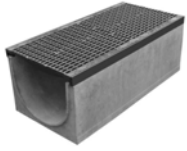

865-M12PN00EA
Page 395



865-M16PN00EA
Page 396



865-T4N10
Page 397

 865-M4N10 Page 391	 865-M6S01DA Page 393	 865-M6S01FA Page 394	 865-M8N00DA Page 395	 865-M12PN00EA Page 395
 865-M16PN00EA Page 396	 865-T4N10 Page 397			

HydroTec™ MAXI System

Maxi 100 - 4" Wide



865-M4DICH

Item Number	Item Description	Pkg Type	Min Qty	Case Qty	Price
GRATES					
865-M4DICH	Half-Meter, Class C, Ductile Iron, Heel Proof Slot	B	1	1	\$74.17
865-M4DICT	Half-Meter, Class C, Ductile Iron, Transverse Slot	B	1	1	\$57.61
865-M4DIDL	Half-Meter, Class D, Ductile Iron, Long Slot, ADA	B	1	1	\$77.18
865-M4DIEM	Half-Meter, Class E, Ductile Iron, Mesh	B	1	1	\$104.72
865-M4DIFH	Half-Meter, Class F, Ductile Iron, Heel Proof Slot	B	1	1	\$118.36
865-M4DIFL	Half-Meter, Class F, Ductile Iron, Long Slot, ADA	B	1	1	\$129.98
CHANNELS					
865-M4N10	One-Meter, 4" Wide × 6.30" Height, Neutral	B	1	1	\$188.96
865-M4N105	Half-Meter, 4" Wide × 6.30" Height, Neutral	B	1	1	\$166.17
865-M4N105S	Half-Meter, 4" Wide × 6.30" Height, Neutral, Side Out	B	1	1	\$193.53
865-M4N10B	One-Meter, 4" Wide × 6.30" Height, Neutral, Bottom Out	B	1	1	\$239.35
865-M4N15	One-Meter, 4" Wide × 7.28" Height, Neutral	B	1	1	\$188.96
865-M4N155	Half-Meter, 4" Wide × 7.28" Height, Neutral	B	1	1	\$166.17
865-M4N155S	Half-Meter, 4" Wide × 7.28" Height, Neutral, Side Out	B	1	1	\$193.53
865-M4N15B	One-Meter, 4" Wide × 7.28" Height, Neutral, Bottom Out	B	1	1	\$239.35
865-M4N20	One-Meter, 4" Wide × 8.27" Height, Neutral	B	1	1	\$188.96
865-M4N205	Half-Meter, 4" Wide × 8.27" Height, Neutral	B	1	1	\$166.17
865-M4N205S	Half-Meter, 4" Wide × 8.27" Height, Neutral, Side Out	B	1	1	\$193.53
865-M4N20B	One-Meter, 4" Wide × 8.27" Height, Neutral, Bottom Out	B	1	1	\$239.35
865-M4N25	One-Meter, 4" Wide × 9.25" Height, Neutral	B	1	1	\$188.96
865-M4N255	Half-Meter, 4" Wide × 9.25" Height, Neutral	B	1	1	\$166.17
865-M4N255S	Half-Meter, 4" Wide × 9.25" Height, Neutral, Side Out	B	1	1	\$193.53
865-M4N25B	One-Meter, 4" Wide × 9.25" Height, Neutral, Bottom Out	B	1	1	\$239.35
865-M4N30	One-Meter, 4" Wide × 10.2" Height, Neutral	B	1	1	\$188.96
865-M4N305	Half-Meter, 4" Wide × 10.2" Height, Neutral	B	1	1	\$166.17
865-M4N305S	Half-Meter, 4" Wide × 10.2" Height, Neutral, Side Out	B	1	1	\$193.53
865-M4N30B	One-Meter, 4" Wide × 10.2" Height, Neutral, Bottom Out	B	1	1	\$239.35
865-M4S01	One-Meter, 4" Wide, Slope # 1	B	1	1	\$188.96
865-M4S02	One-Meter, 4" Wide, Slope # 2	B	1	1	\$188.96
865-M4S03	One-Meter, 4" Wide, Slope # 3	B	1	1	\$188.96
865-M4S04	One-Meter, 4" Wide, Slope # 4	B	1	1	\$188.96
865-M4S05	One-Meter, 4" Wide, Slope # 5	B	1	1	\$188.96
865-M4S06	One-Meter, 4" Wide, Slope # 6	B	1	1	\$188.96
865-M4S07	One-Meter, 4" Wide, Slope # 7	B	1	1	\$188.96
865-M4S08	One-Meter, 4" Wide, Slope # 8	B	1	1	\$188.96
865-M4S09	One-Meter, 4" Wide, Slope # 9	B	1	1	\$188.96
865-M4S10	One-Meter, 4" Wide, Slope # 10	B	1	1	\$188.96
865-M4S11	One-Meter, 4" Wide, Slope # 11	B	1	1	\$188.96
865-M4S12	One-Meter, 4" Wide, Slope # 12	B	1	1	\$188.96
865-M4S13	One-Meter, 4" Wide, Slope # 13	B	1	1	\$188.96
865-M4S14	One-Meter, 4" Wide, Slope # 14	B	1	1	\$188.96
865-M4S15	One-Meter, 4" Wide, Slope # 15	B	1	1	\$188.96
865-M4S16	One-Meter, 4" Wide, Slope # 16	B	1	1	\$188.96

Supply

Drainage

Support

Specialties

Appendix

HydroTec™ MAXI System (Cont)

Maxi 100 - 4" Wide

Item Number	Item Description	Pkg Type	Min Qty	Case Qty	Price
CHANNELS					
865-M4S17	One-Meter, 4" Wide, Slope # 17	B	1	1	\$188.96
865-M4S18	One-Meter, 4" Wide, Slope # 18	B	1	1	\$188.96
865-M4S19	One-Meter, 4" Wide, Slope # 19	B	1	1	\$188.96
865-M4S20	One-Meter, 4" Wide, Slope # 20	B	1	1	\$188.96
865-M4S21	One-Meter, 4" Wide, Slope # 21	B	1	1	\$188.96
865-M4S22	One-Meter, 4" Wide, Slope # 22	B	1	1	\$188.96
865-M4S23	One-Meter, 4" Wide, Slope # 23	B	1	1	\$188.96
865-M4S24	One-Meter, 4" Wide, Slope # 24	B	1	1	\$188.96
865-M4S25	One-Meter, 4" Wide, Slope # 25	B	1	1	\$188.96
865-M4S26	One-Meter, 4" Wide, Slope # 26	B	1	1	\$188.96
865-M4S27	One-Meter, 4" Wide, Slope # 27	B	1	1	\$188.96
865-M4S28	One-Meter, 4" Wide, Slope # 28	B	1	1	\$188.96
865-M4S29	One-Meter, 4" Wide, Slope # 29	B	1	1	\$188.96
865-M4S30	One-Meter, 4" Wide, Slope # 30	B	1	1	\$188.96
LOW-PROFILE CHANNELS					
865-M4LP00	One-Meter, 4" Wide × 3.15" Height, Neutral	B	1	1	\$188.96
865-M4LP005	Half-Meter, 4" Wide × 3.15" Height, Neutral	B	1	1	\$166.17
865-M4LP00B	One-Meter, 4" Wide × 3.15" Height, Neutral, Bottom Out	B	1	1	\$239.35
865-M4N00	One-Meter, 4" Wide × 4.33" Height, Neutral	B	1	1	\$188.96
865-M4N005	Half-Meter, 4" Wide × 4.33" Height, Neutral	B	1	1	\$166.17
865-M4N00B	One-Meter, 4" Wide × 4.33" Height, Neutral, Bottom Out	B	1	1	\$239.35
CATCH BASIN					
865-M4CB	Half-Meter, Catch Basin w/ Galv Steel Debris Basket - 6" Outlet	B	1	1	\$369.54
ACCESSORIES					
865-4BK	Installation Bracket for Maxi/Top 100 Channels	B	1	1	\$44.50
865-4EC	4" Closed End Cap - 2 Piece	B	1	1	\$40.92
865-4LPEC3	4" Closed End Cap For 3.15" Channel	B	1	1	\$29.65
865-4LPEC4	4" Closed End Cap For 4.33" Channel	B	1	1	\$29.65
865-4LR	Grate-Locking Rod For 4" Channels	B	1	1	\$1.73
865-4OC	4" Open End Cap - 2 Piece	B	1	1	\$40.92
865-4PC	4" PVC S&D Pipe Connection	B	1	1	\$14.82
865-4RS	4" Rubber Sleeve / Seal For Bottom Outs	B	1	1	\$54.44
865-SHOVEL	Cleaning Shovel For Mini/Top/Maxi	B	1	1	\$203.49
865-TOOL	Grate-Locking Tool	B	1	1	\$39.14



865-M4N10



865-M4LP00



865-M4CB



865-TOOL

Supply

Drainage

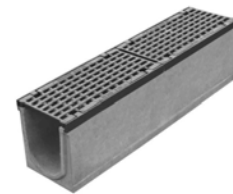
Support

Specialties

Appendix

HydroTec™ MAXI System

Maxi 150 - 6" Wide



865-M6S01DA

Item Number	Item Description	Pkg Type	Min Qty	Case Qty	Price
CHANNELS - CLASS D GRATE					
865-M6CBDA	Half-Meter, Catch Basin w/ Galv Basket And Class D Ductile Iron ADA Grate - 6" Outlet	B	1	1	\$897.22
865-M6N005DA	Half-Meter, 6" Wide × 8.27" Height, Neutral w/ Class D ADA Ductile Iron Grate	B	1	1	\$318.58
865-M6N005SDA	Half-Meter, 6" Wide × 8.27" Height, Neutral, Side Out w/ Class D ADA Ductile Iron Grate	B	1	1	\$371.81
865-M6N00BDA	One-Meter, 6" Wide × 8.27" Height, Neutral, Bottom Out w/ Class D ADA Ductile Iron Grate	B	1	1	\$647.10
865-M6N00DA	One-Meter, 6" Wide × 8.27" Height, Neutral w/ Class D ADA Ductile Iron Grate	B	1	1	\$523.38
865-M6N055DA	Half-Meter, 6" Wide × 10.24" Height, Neutral w/ Class D ADA Ductile Iron Grate	B	1	1	\$318.58
865-M6N055SDA	Half-Meter, 6" Wide × 10.24" Height, Neutral, Side Out w/ Class D ADA Ductile Iron Grate	B	1	1	\$371.81
865-M6N05BDA	One-Meter, 6" Wide × 10.24" Height, Neutral, Bottom Out w/ Class D ADA Ductile Iron Grate	B	1	1	\$647.10
865-M6N05DA	One-Meter, 6" Wide × 10.24" Height, Neutral w/ Class D ADA Ductile Iron Grate	B	1	1	\$523.38
865-M6N105DA	Half-Meter, 6" Wide × 12.20" Height, Neutral w/ Class D ADA Ductile Iron Grate	B	1	1	\$318.58
865-M6N105SDA	Half-Meter, 6" Wide × 12.20" Height, Neutral, Side Out w/ Class D ADA Ductile Iron Grate	B	1	1	\$371.81
865-M6N10BDA	One-Meter, 6" Wide × 12.20" Height, Neutral, Bottom Out w/ Class D ADA Ductile Iron Grate	B	1	1	\$647.10
865-M6N10DA	One-Meter, 6" Wide × 12.20" Height, Neutral w/ Class D ADA Ductile Iron Grate	B	1	1	\$523.38
865-M6S01DA	One-Meter, 6" Wide, Slope # 1 w/ Class D ADA Ductile Iron Grate	B	1	1	\$523.38
865-M6S02DA	One-Meter, 6" Wide, Slope # 2 w/ Class D ADA Ductile Iron Grate	B	1	1	\$523.38
865-M6S03DA	One-Meter, 6" Wide, Slope # 3 w/ Class D ADA Ductile Iron Grate	B	1	1	\$523.38
865-M6S04DA	One-Meter, 6" Wide, Slope # 4 w/ Class D ADA Ductile Iron Grate	B	1	1	\$523.38
865-M6S05DA	One-Meter, 6" Wide, Slope # 5 w/ Class D ADA Ductile Iron Grate	B	1	1	\$523.38
865-M6S06DA	One-Meter, 6" Wide, Slope # 6 w/ Class D ADA Ductile Iron Grate	B	1	1	\$523.38
865-M6S07DA	One-Meter, 6" Wide, Slope # 7 w/ Class D ADA Ductile Iron Grate	B	1	1	\$523.38
865-M6S08DA	One-Meter, 6" Wide, Slope # 8 w/ Class D ADA Ductile Iron Grate	B	1	1	\$523.38
865-M6S09DA	One-Meter, 6" Wide, Slope # 9 w/ Class D ADA Ductile Iron Grate	B	1	1	\$523.38
865-M6S10DA	One-Meter, 6" Wide, Slope # 10 w/ Class D ADA Ductile Iron Grate	B	1	1	\$523.38
CHANNELS - CLASS F GRATE					
865-M6CBFA	Half-Meter, Catch Basin w/ Galv Basket And Class F ADA Ductile Iron Grate - 6" Outlet	B	1	1	\$946.60
865-M6N005FA	Half-Meter, 6" Wide × 8.27" Height, Neutral w/ Class F ADA Ductile Iron Grate	B	1	1	\$367.62
865-M6N005SFA	Half-Meter, 6" Wide × 8.27" Height, Neutral, Side Out w/ Class F ADA Ductile Iron Grate	B	1	1	\$423.19
865-M6N00BFA	One-Meter, 6" Wide × 8.27" Height, Neutral, Bottom Out w/ Class F ADA Ductile Iron Grate	B	1	1	\$725.86
865-M6N00FA	One-Meter, 6" Wide × 8.27" Height, Neutral w/ Class F ADA Ductile Iron Grate	B	1	1	\$589.89
865-M6N055FA	Half-Meter, 6" Wide × 10.24" Height, Neutral w/ Class F ADA Ductile Iron Grate	B	1	1	\$367.62

Supply

Drainage

Support

Specialties

Appendix

HydroTec™ MAXI System (Cont)

Maxi 150 - 6" Wide

Item Number	Item Description	Pkg Type	Min Qty	Case Qty	Price
CHANNELS - CLASS F GRATE					
865-M6N055SFA	Half-Meter, 6" Wide × 10.24" Height, Neutral, Side Out w/ Class F ADA Ductile Iron Grate	B	1	1	\$423.19
865-M6N05BFA	One-Meter, 6" Wide × 10.24" Height, Neutral, Bottom Out w/ Class F ADA Ductile Iron Grate	B	1	1	\$712.29
865-M6N05FA	One-Meter, 6" Wide × 10.24" Height, Neutral w/ Class F ADA Ductile Iron Grate	B	1	1	\$589.89
865-M6N105FA	Half-Meter, 6" Wide × 12.20" Height, Neutral w/ Class F ADA Ductile Iron Grate	B	1	1	\$367.62
865-M6N105SFA	Half-Meter, 6" Wide × 12.20" Height, Neutral, Side Out w/ Class F ADA Ductile Iron Grate	B	1	1	\$423.19
865-M6N10BFA	One-Meter, 6" Wide × 12.20" Height, Neutral, Bottom Out w/ Class F ADA Ductile Iron Grate	B	1	1	\$712.29
865-M6N10FA	One-Meter, 6" Wide × 12.20" Height, Neutral w/ Class F ADA Ductile Iron Grate	B	1	1	\$589.89
865-M6S01FA	One-Meter, 6" Wide, Slope # 1 w/ Class F ADA Ductile Iron Grate	B	1	1	\$589.89
865-M6S02FA	One-Meter, 6" Wide, Slope # 2 w/ Class F ADA Ductile Iron Grate	B	1	1	\$589.89
865-M6S03FA	One-Meter, 6" Wide, Slope # 3 w/ Class F ADA Ductile Iron Grate	B	1	1	\$589.89
865-M6S04FA	One-Meter, 6" Wide, Slope # 4 w/ Class F ADA Ductile Iron Grate	B	1	1	\$589.89
865-M6S05FA	One-Meter, 6" Wide, Slope # 5 w/ Class F ADA Ductile Iron Grate	B	1	1	\$589.89
865-M6S06FA	One-Meter, 6" Wide, Slope # 6 w/ Class F ADA Ductile Iron Grate	B	1	1	\$589.89
865-M6S07FA	One-Meter, 6" Wide, Slope # 7 w/ Class F ADA Ductile Iron Grate	B	1	1	\$589.89
865-M6S08FA	One-Meter, 6" Wide, Slope # 8 w/ Class F ADA Ductile Iron Grate	B	1	1	\$589.89
865-M6S09FA	One-Meter, 6" Wide, Slope # 9 w/ Class F ADA Ductile Iron Grate	B	1	1	\$589.89
865-M6S10FA	One-Meter, 6" Wide, Slope # 10 w/ Class F ADA Ductile Iron Grate	B	1	1	\$589.89
CHANNELS - CLASS F GRATE WITH F1-LOCKING FEATURE					
865-M6CBF1A	Half-Meter, Catch Basin w/ Galv Basket And F1 Class F ADA Grate - 6" Outlet	B	1	1	\$978.97
865-M6N005F1A	Half-Meter, 6" Wide × 8.27" Height, Neutral w/ F1 Class F ADA Ductile Iron Grate	B	1	1	\$400.01
865-M6N005SF1A	Half-Meter, 6" Wide × 8.27" Height, Neutral, Side Out w/ F1 Class F ADA Ductile Iron Grate	B	1	1	\$455.52
865-M6N00BF1A	One-Meter, 6" Wide × 8.27" Height, Neutral, Bottom Out w/ F1 Class F ADA Ductile Iron Grate	B	1	1	\$777.01
865-M6N00F1A	One-Meter, 6" Wide × 8.27" Height, Neutral w/ F1 Class F ADA Ductile Iron Grate	B	1	1	\$654.64
ACCESSORIES					
865-6LR	Grate-Locking Rod For 6" Channels	B	1	1	\$2.32
865-6PC	PVC S&D Pipe Connection for 6" Outs	B	1	1	\$27.26
865-6PCE	6" Oval PVC Pipe Connection	B	1	1	\$45.05
865-6RS	Rubber Sleeve/Seal For 6" Bottom Outs	B	1	1	\$65.21
865-6UC	6" Universal End Cap - Open & Closed	BI	1	20	\$49.53
865-SHOVEL	Cleaning Shovel For Mini/Top/Maxi	B	1	1	\$203.49
865-TOOL	Grate-Locking Tool	B	1	1	\$39.14



865-M6S01FA



865-6UC

Supply

Drainage

Support

Specialties

Appendix

HydroTec™ MAXI System

Maxi 200 - 8" Wide

Item Number	Item Description	Pkg Type	Min Qty	Case Qty	Price
CHANNELS - CLASS D GRATE					
865-M8CBDA	Half-Meter, Catch Basin w/ Galv Basket And Class D ADA Ductile Iron Grate - 6" Outlet	B	1	1	\$883.97
865-M8N005DA	Half-Meter, 8" Wide × 12.20" Height w/ Class D ADA Ductile Iron Grate	B	1	1	\$416.74
865-M8N005SDA	Half-Meter, 8" Wide × 12.20" Height, Side Out w/ Class D ADA Ductile Iron Grate	B	1	1	\$462.67
865-M8N00BDA	One-Meter, 8" Wide × 12.20" Height, Bottom Out w/ Class D ADA Ductile Iron Grate	B	1	1	\$768.42
865-M8N00DA	One-Meter, 8" Wide × 12.20" Height w/ Class D ADA Ductile Iron Grate	B	1	1	\$690.65
CHANNELS - CLASS F GRATE					
865-M8CBFA	Half-Meter, Catch Basin w/ Galv Basket And Class F ADA Ductile Iron Grate - 6" Outlet	B	1	1	\$935.00
865-M8N005FA	Half-Meter, 8" Wide × 12.20" Height w/ Class F ADA Ductile Iron Grate	B	1	1	\$457.10
865-M8N005SFA	Half-Meter, 8" Wide × 12.20" Height, Side Out w/ Class F ADA Ductile Iron Grate	B	1	1	\$512.43
865-M8N00BFA	One-Meter, 8" Wide × 12.20" Height, Bottom Out w/ Class F ADA Ductile Iron Grate	B	1	1	\$837.15
865-M8N00FA	One-Meter, 8" Wide × 12.20" Height w/ Class F ADA Ductile Iron Grate	B	1	1	\$762.09
CHANNELS - CLASS F GRATE WITH F1-LOCKING FEATURE					
865-M8CBF1A	Half-Meter, Catch Basin w/ Galv Basket And F1 Class F ADA Ductile Iron Grate - 6" Outlet	B	1	1	\$970.26
865-M8N005F1A	Half-Meter, 8" Wide × 12.20" Height w/ F1 Class F ADA Ductile Iron Grate	B	1	1	\$465.24
865-M8N005SF1A	Half-Meter, 8" Wide × 12.20" Height, Side Out w/ F1 Class F ADA Ductile Iron Grate	B	1	1	\$547.71
865-M8N00BF1A	One-Meter, 8" Wide × 12.20" Height, Bottom Out w/ F1 Class F ADA Ductile Iron Grate	B	1	1	\$907.68
865-M8N00F1A	One-Meter, 8" Wide × 12.20" Height w/ F1 Class F ADA Ductile Iron Grate	B	1	1	\$776.01
ACCESSORIES					
865-6PC	PVC S&D Pipe Connection for 6" Outs	B	1	1	\$27.26
865-6RS	Rubber Sleeve/Seal For 6" Bottom Outs	B	1	1	\$65.21
865-8ECD	8" Closed End Cap - 1 Piece Iron	B	1	1	\$96.22
865-8LR	Grate-Locking Rod For 8" Channels	B	1	1	\$2.16
865-8OCD	8" Open End Cap - 1 Piece Iron	B	1	1	\$282.08
865-SHOVEL	Cleaning Shovel For Mini/Top/Maxi	B	1	1	\$203.49
865-TOOL	Grate-Locking Tool	B	1	1	\$39.14



865-M8N00DA

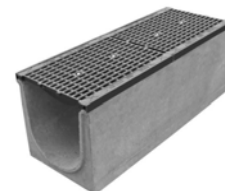


865-TOOL

HydroTec™ MAXI System

Maxi 300 - 12" Wide

Item Number	Item Description	Pkg Type	Min Qty	Case Qty	Price
CHANNELS - CLASS E GRATE WITH F1-LOCKING FEATURE					
865-M12PCBEA	Half-Meter, Catch Basin w/ Galv Basket And Class E ADA Ductile Iron Grate - 8" Outlet	B	1	1	\$1,762.20
865-M12PN005EA	Half-Meter, 12" Wide × 15.75" Height w/ Class E ADA Ductile Iron Grate	B	1	1	\$800.90
865-M12PN00BEA	One-Meter, 12" Wide × 15.75" Height, Bottom Out w/ Class E ADA Ductile Iron Grate	B	1	1	\$1,564.77
865-M12PN00EA	One-Meter, 12" Wide × 15.75" Height w/ Class E ADA Ductile Iron Grate	B	1	1	\$1,397.24



865-M12PN00EA

Supply

Drainage

Support

Specialties

Appendix

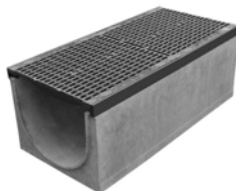
HydroTec™ MAXI System (Cont)

Maxi 300 - 12" Wide

Item Number	Item Description	Pkg Type	Min Qty	Case Qty	Price
CHANNELS - CLASS F GRATE WITH F1-LOCKING FEATURE					
865-M12PCBFA	Half-Meter, Catch Basin w/ Galv Basket And Class F ADA Ductile Iron Grate - 8" Outlet	B	1	1	\$1,932.43
865-M12PN005FA	Half-Meter, 12" Wide × 15.75" Height w/ Class F ADA Ductile Iron Grate	B	1	1	\$874.00
865-M12PN00BFA	One-Meter, 12" Wide × 15.75" Height, Bottom Out w/ Class F ADA Ductile Iron Grate	B	1	1	\$1,699.62
865-M12PN00FA	One-Meter, 12" Wide × 15.75" Height w/ Class F ADA Ductile Iron Grate	B	1	1	\$1,530.64
ACCESSORIES					
865-12ECD	12" Closed End Cap - 1 Piece Iron	B	1	1	\$142.35
865-12OCD	12" Open End Cap - 1 Piece Iron	B	1	1	\$281.72
865-8PC	PVC S&D Pipe Connection for 8" Outs	B	1	1	\$40.43
865-8RS	Rubber Sleeve/Seal For 8" Bottom Outs	B	1	1	\$83.01
865-SHOVEL	Cleaning Shovel For Mini/Top/Maxi	B	1	1	\$203.49

HydroTec™ MAXI System

Maxi 400 - 16" Wide



865-M16PN00EA

Item Number	Item Description	Pkg Type	Min Qty	Case Qty	Price
CHANNELS - CLASS E GRATE WITH F1-LOCKING FEATURE					
865-M16PCBEA	Half-Meter, Catch Basin w/ Galv Basket And Class E ADA Ductile Iron Grate - 8" Outlet	B	1	1	\$2,406.52
865-M16PN005EA	Half-Meter, 16" Wide × 15.75" Height w/ Class E ADA Ductile Iron Grate	B	1	1	\$1,076.21
865-M16PN00BEA	One-Meter, 16" Wide × 15.75" Height, Bottom Out w/ Class E ADA Ductile Iron Grate	B	1	1	\$2,010.05
865-M16PN00EA	One-Meter, 16" Wide × 15.75" Height w/ Class E ADA Ductile Iron Grate	B	1	1	\$1,856.17
CHANNELS - CLASS F GRATE WITH F1-LOCKING FEATURE					
865-M16PCBFA	Half-Meter, Catch Basin w/ Galv Basket And Class F ADA Ductile Iron Grate - 8" Outlet	B	1	1	\$2,740.71
865-M16PN005FA	Half-Meter, 16" Wide × 15.75" Height w/ Class F ADA Ductile Iron Grate	B	1	1	\$1,224.55
865-M16PN00BFA	One-Meter, 16" Wide × 15.75" Height, Bottom Out w/ Class F ADA Ductile Iron Grate	B	1	1	\$2,262.18
865-M16PN00FA	One-Meter, 16" Wide × 15.75" Height w/ Class F ADA Ductile Iron Grate	B	1	1	\$2,102.95
ACCESSORIES					
865-16ECD	16" Ductile Closed End Cap	B	1	1	\$175.02
865-16OCD	16" Ductile Open End Cap	B	1	1	\$335.09
865-8PC	PVC S&D Pipe Connection for 8" Outs	B	1	1	\$40.43
865-8RS	Rubber Sleeve/Seal For 8" Bottom Outs	B	1	1	\$83.01
865-SHOVEL	Cleaning Shovel For Mini/Top/Maxi	B	1	1	\$203.49

Supply

Drainage

Support

Specialties

Appendix

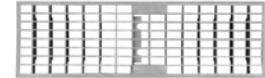
HydroTec™ TOP System

Top 100 - 4" Wide

Item Number	Item Description	Pkg Type	Min Qty	Case Qty	Price
GRATES					
865-T4DI5CL	Half-Meter, Class C, Ductile Iron, Long Slot, ADA	B	1	1	\$73.93
865-T4DI5CX	Half-Meter, Class C, Ductile Iron, Cross-Slot	B	1	1	\$68.54
865-T4GS5AS	Half-Meter, Class A, Galvanized Steel, Slotted	B	1	1	\$37.16
865-T4GS5CM	Half-Meter, Class C, Galvanized Steel, Mesh, ADA	B	1	1	\$98.25
865-T4GS5CP	Half-Meter, Class C, Galvanized Steel, Perforated	B	1	1	\$106.49
865-T4GS5CS	Half-Meter, Class C, Galvanized Steel, Slotted	B	1	1	\$93.15
865-T4GSA5P	Half-Meter, Class A, Galvanized Steel, Perforated	B	1	1	\$58.16
865-T4GSAP	One-Meter, Class A, Galvanized Steel, Perforated	B	1	1	\$92.72
865-T4GSAS	One-Meter, Class A, Galvanized Steel, Slotted	B	1	1	\$61.15
865-T4GSCM	One-Meter, Class C, Galvanized Steel, Mesh, ADA	B	1	1	\$142.23
865-T4GSCP	One-Meter, Class C, Galvanized Steel, Perforated	B	1	1	\$175.32
865-T4GSCS	One-Meter, Class C, Galvanized Steel, Slotted	B	1	1	\$131.85
865-T4P5BL	Half-Meter, Class B, Plastic, Long Slot, ADA	B	1	1	\$73.93
CHANNELS					
865-T4N10	One-Meter, 4" Wide × 6.30" Height, Neutral	B	1	1	\$147.82
865-T4N105	Half-Meter, 4" Wide × 6.30" Height, Neutral	B	1	1	\$99.39
865-T4N105S	Half-Meter, 4" Wide × 6.30" Height, Neutral, Side Out	B	1	1	\$126.99
865-T4N10B	One-Meter, 4" Wide × 6.30" Height, Neutral, Bottom Out	B	1	1	\$206.94
865-T4N15	One-Meter, 4" Wide × 7.28 Height, Neutral	B	1	1	\$147.82
865-T4N155	Half-Meter, 4" Wide × 7.28 Height, Neutral	B	1	1	\$99.39
865-T4N155S	Half-Meter, 4" Wide × 7.28 Height, Neutral, Side Out	B	1	1	\$126.99
865-T4N15B	One-Meter, 4" Wide × 7.28 Height, Neutral, Bottom Out	B	1	1	\$206.94
865-T4N20	One-Meter, 4" Wide × 8.27 Height, Neutral	B	1	1	\$147.82
865-T4N205	Half-Meter, 4" Wide × 8.27 Height, Neutral	B	1	1	\$99.39
865-T4N205S	Half-Meter, 4" Wide × 8.27 Height, Neutral, Side Out	B	1	1	\$126.99
865-T4N20B	One-Meter, 4" Wide × 8.27 Height, Neutral, Bottom Out	B	1	1	\$206.94
865-T4S01	One-Meter, 4" Wide, Slope # 1 w/ Galv Edge-Rails	B	1	1	\$147.82
865-T4S02	One-Meter, 4" Wide, Slope # 2 w/ Galv Edge-Rails	B	1	1	\$147.82
865-T4S03	One-Meter, 4" Wide, Slope # 3 w/ Galv Edge-Rails	B	1	1	\$147.82
865-T4S04	One-Meter, 4" Wide, Slope # 4 w/ Galv Edge-Rails	B	1	1	\$147.82
865-T4S05	One-Meter, 4" Wide, Slope # 5 w/ Galv Edge-Rails	B	1	1	\$147.82
865-T4S06	One-Meter, 4" Wide, Slope # 6 w/ Galv Edge-Rails	B	1	1	\$147.82
865-T4S07	One-Meter, 4" Wide, Slope # 7 w/ Galv Edge-Rails	B	1	1	\$147.82
865-T4S08	One-Meter, 4" Wide, Slope # 8 w/ Galv Edge-Rails	B	1	1	\$147.82
865-T4S09	One-Meter, 4" Wide, Slope # 9 w/ Galv Edge-Rails	B	1	1	\$147.82
865-T4S10	One-Meter, 4" Wide, Slope # 10 w/ Galv Edge-Rails	B	1	1	\$147.82
865-T4S11	One-Meter, 4" Wide, Slope # 11 w/ Galv Edge-Rails	B	1	1	\$147.82
865-T4S12	One-Meter, 4" Wide, Slope # 12 w/ Galv Edge-Rails	B	1	1	\$147.82



865-T4DI5CL



865-T4GS5CM



865-T4GS5CS

Supply

Drainage

Support

Specialties

Appendix

HydroTec™ TOP System (Cont)

Top 100 - 4" Wide

Item Number	Item Description	Pkg Type	Min Qty	Case Qty	Price
CHANNELS					
865-T4S13	One-Meter, 4" Wide, Slope # 13 w/ Galv Edge-Rails	B	1	1	\$147.82
865-T4S14	One-Meter, 4" Wide, Slope # 14 w/ Galv Edge-Rails	B	1	1	\$147.82
865-T4S15	One-Meter, 4" Wide, Slope # 15 w/ Galv Edge-Rails	B	1	1	\$147.82
865-T4S16	One-Meter, 4" Wide, Slope # 16 w/ Galv Edge-Rails	B	1	1	\$147.82
865-T4S17	One-Meter, 4" Wide, Slope # 17 w/ Galv Edge-Rails	B	1	1	\$147.82
865-T4S18	One-Meter, 4" Wide, Slope # 18 w/ Galv Edge-Rails	B	1	1	\$147.82
865-T4S19	One-Meter, 4" Wide, Slope # 19 w/ Galv Edge-Rails	B	1	1	\$147.82
865-T4S20	One-Meter, 4" Wide, Slope # 20 w/ Galv Edge-Rails	B	1	1	\$147.82
865-T4S21	One-Meter, 4" Wide, Slope # 21 w/ Galv Edge-Rails	B	1	1	\$147.82
865-T4S22	One-Meter, 4" Wide, Slope # 22 w/ Galv Edge-Rails	B	1	1	\$147.82
865-T4S23	One-Meter, 4" Wide, Slope # 23 w/ Galv Edge-Rails	B	1	1	\$147.82
865-T4S24	One-Meter, 4" Wide, Slope # 24 w/ Galv Edge-Rails	B	1	1	\$147.82
865-T4S25	One-Meter, 4" Wide, Slope # 25 w/ Galv Edge-Rails	B	1	1	\$147.82
865-T4S26	One-Meter, 4" Wide, Slope # 26 w/ Galv Edge-Rails	B	1	1	\$147.82
865-T4S27	One-Meter, 4" Wide, Slope # 27 w/ Galv Edge-Rails	B	1	1	\$147.82
865-T4S28	One-Meter, 4" Wide, Slope # 28 w/ Galv Edge-Rails	B	1	1	\$147.82
865-T4S29	One-Meter, 4" Wide, Slope # 29 w/ Galv Edge-Rails	B	1	1	\$147.82
865-T4S30	One-Meter, 4" Wide, Slope # 30 w/ Galv Edge-Rails	B	1	1	\$147.82
LOW-PROFILE CHANNELS					
865-T4LP003	One-Meter, 4" Wide × 3.15" Height, Neutral	B	1	1	\$112.59
865-T4LP0053	Half-Meter, 4" Wide × 3.15" Height, Neutral	B	1	1	\$94.03
865-T4LP00B03	One-Meter, 4" Wide × 3.15" Height, Neutral, Bottom Out	B	1	1	\$209.35
865-T4N00	One-Meter, 4" Wide × 4.33" Height, Neutral	B	1	1	\$147.82
865-T4N005	Half-Meter, 4" Wide × 4.33" Height, Neutral	B	1	1	\$99.39
865-T4N00B	One-Meter, 4" Wide × 4.33" Height, Neutral, Bottom Out	B	1	1	\$206.94
CATCH BASIN					
865-T4CB	Half-Meter, Catch Basin w/ Galv Steel Debris Basket - 6" Outlet	B	1	1	\$301.23



865-T4N10



865-T4N00



865-T4CB

Supply

Drainage

Support

Specialties

Appendix

HydroTec™ TOP System (Cont)

Top 100 - 4" Wide

Item Number	Item Description	Pkg Type	Min Qty	Case Qty	Price
ACCESSORIES					
865-4BK	Installation Bracket for Maxi/Top 100 Channels	B	1	1	\$44.50
865-4EC	4" Closed End Cap - 2 Piece	B	1	1	\$40.92
865-4LPEC3	4" Closed End Cap For 3.15" Channel	B	1	1	\$29.65
865-4LPEC4	4" Closed End Cap For 4.33" Channel	B	1	1	\$29.65
865-4LR	Grate-Locking Rod For 4" Channels	B	1	1	\$1.73
865-4OC	4" Open End Cap - 2 Piece	B	1	1	\$40.92
865-4PC	4" PVC S&D Pipe Connection	B	1	1	\$14.82
865-4RS	4" Rubber Sleeve / Seal For Bottom Outs	B	1	1	\$54.44
865-SHOVEL	Cleaning Shovel For Mini/Top/Maxi	B	1	1	\$203.49
865-TOOL	Grate-Locking Tool	B	1	1	\$39.14
865-TOOLP	Grate-Locking Tool For Perf-100 Grates	B	1	1	\$39.14



Supply

Drainage

Support

Specialties

Appendix

HydroBlock™ System

HydroBlock™ 100

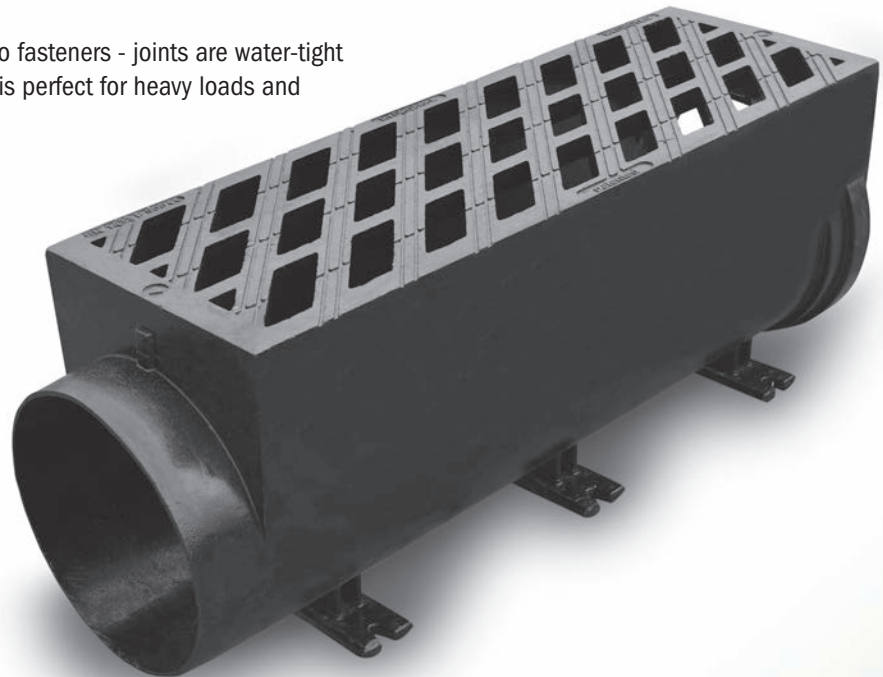
HydroBlock™ 150

HydroBlock™ 200

HydroBlock™ 300

One-piece ductile iron channel and grate system designed for ultimate durability and rattle-free operation.

Sections join together easily with no fasteners - joints are water-tight and anti-torque. One-piece design is perfect for heavy loads and high-traffic areas.





HydroBlock™ 100

Item Number	Item Description	Pkg Type	Min Qty	Case Qty	Price
865-HB4005BFA	Half-Meter, 4" Wide, Bottom Out w/ Ductile Iron Removable Grate	B	1	1	\$508.71
865-HB4005HSFA	Half-Meter, 4" Wide, End Out w/ Ductile Iron Removable Grate	B	1	1	\$508.71
865-HB4005SFA	Half-Meter, 4" Wide, Right Side Out w/ Ductile Iron Removable Grate	B	1	1	\$508.71
865-HB400FA	One-Meter, 4" Wide w/ Ductile Iron Grate	B	1	1	\$500.30
865-HB4CBFA	Catch Basin w/ Removable Ductile Iron Grate	B	1	1	\$989.51
ACCESSORIES					
865-HB4EC	Closed End Cap For Socket End	B	1	1	\$19.88
865-HB4INSB	Installation Aid Tool	B	1	1	\$335.51
865-HB4OC	Closed End Cap For Spigot End	B	1	1	\$19.88



865-HB400FA



865-HB4EC

HydroBlock™ 150

Item Number	Item Description	Pkg Type	Min Qty	Case Qty	Price
865-HB6005BFA	Half-Meter, 6" Wide, Bottom Out w/Ductile Iron Removable Grate	B	1	1	\$626.07
865-HB6005HSFA	Half-Meter, 6" Wide, Left/Right/End Out w/Ductile Iron Removable Grate	B	1	1	\$626.07
865-HB600FA	One-Meter, 6" Wide w/Ductile Iron Grate	B	1	1	\$754.01
865-HB6CBFA	Catch Basin w/ Removable Ductile Iron Grate	B	1	1	\$1,137.27
ADA COMPLIANT					
865-HB6ADA005BFA	Half-Meter, 6" Wide, Bottom Out w/ ADA Ductile Iron Removable Grate	B	1	1	\$676.68
865-HB6ADA005FA	Half-Meter, 6" Wide, w/ ADA Ductile Iron Removable Grate	B	1	1	\$676.68
865-HB6ADA005HSFA	Half-Meter, 6" Wide, Left/Right/End Out w/ ADA Ductile Iron Removable Grate	B	1	1	\$676.68
865-HB6ADA00FA	One-Meter, 6" Wide w/ ADA Ductile Iron Grate	B	1	1	\$817.25
865-HB6ADACBFA	Catch Basin w/ Removable ADA Ductile Iron Grate	B	1	1	\$1,225.96
ACCESSORIES					
865-HB6AINSB	Installation Aid Tool for ADA Pattern	B	1	1	\$335.51
865-HB6DS	Domed Debris Strainer for Bottom Outlet	B	1	1	\$46.40
865-HB6EC	Closed End Cap For Socket End	B	1	1	\$26.80
865-HB6INSB	Installation Aid Tool	B	1	1	\$335.51
865-HB6OC	Closed End Cap For Spigot End	B	1	1	\$26.80



865-HB600FA



865-HB6ADA005HSFA

HydroBlock™ 200

Item Number	Item Description	Pkg Type	Min Qty	Case Qty	Price
865-HB8005BFA	Half-Meter, 8" Wide, Bottom Out w/ Ductile Iron Removable Grate	B	1	1	\$871.88
865-HB8005SFA	Half-Meter, 8" Wide, Left/Right Out w/ Ductile Iron Removable Grate	B	1	1	\$871.87
865-HB800FA	One-Meter, 8" Wide w/ Ductile Iron Grate	B	1	1	\$1,130.39
865-HB8CBFA	Catch Basin w/ Removable Ductile Iron Grate	B	1	1	\$1,259.58



865-HB800FA

Supply

Drainage

Support

Specialties

Appendix



865-HB80C



865-HB1200FA



865-HB12ADA005BFA



865-HB120C

HydroBlock™ 200 (Cont)

Item Number	Item Description	Pkg Type	Min Qty	Case Qty	Price
ADA COMPLIANT					
865-HB8ADA005BFA	Half-Meter, 8" Wide, Bottom Out w/ ADA Ductile Iron Removable Grate	B	1	1	\$941.45
865-HB8ADA005FA	Half-Meter, 8" Wide, w/ ADA Ductile Iron Removable Grate	B	1	1	\$941.45
865-HB8ADA005SFA	Half-Meter, 8" Wide, Left/Right Out w/ ADA Ductile Iron Removable Grate	B	1	1	\$941.45
865-HB8ADA00FA	One-Meter, 8" Wide w/ ADA Ductile Iron Grate	B	1	1	\$1,225.37
865-HB8ADACBFA	Catch Basin w/ Removable ADA Ductile Iron Grate	B	1	1	\$1,360.90
ACCESSORIES					
865-HB6AINSB	Installation Aid Tool for ADA Pattern	B	1	1	\$335.51
865-HB6INSB	Installation Aid Tool	B	1	1	\$335.51
865-HB8EC	Closed End Cap For Socket End	B	1	1	\$24.85
865-HB80C	Closed End Cap For Spigot End	B	1	1	\$24.85

HydroBlock™ 300

Item Number	Item Description	Pkg Type	Min Qty	Case Qty	Price
865-HB12005BFA	Three-Quarter-Meter, 12" Wide, Bottom Out w/ Ductile Removable Grate	B	1	1	\$2,182.71
865-HB1200FA	One-Meter, 12" Wide w/ Ductile Iron Grate	B	1	1	\$2,182.71
ADA COMPLIANT					
865-HB12ADA005BFA	Three-Quarter-Meter, 12" Wide, Bottom Out w/ ADA Ductile Removable Grate	B	1	1	\$2,359.93
865-HB12ADA005FA	Three-Quarter-Meter, 12" Wide, w/ ADA Ductile Removable Grate	B	1	1	\$2,359.93
865-HB12ADA005SFA	Three Quarter-Meter, 12" Wide, Left/Right Side Out w/ Ada Ductile Iron Removable Grate	B	1	1	\$2,359.93
865-HB12ADA00FA	One-Meter, 12" Wide w/ ADA Ductile Iron Grate	B	1	1	\$2,359.93
ACCESSORIES					
865-12PC	12" PVC S&D Pipe Connector	B	1	1	\$93.12
865-HB12EC	Closed End Cap For Socket End	B	1	1	\$166.01
865-HB120C	Closed End Cap For Spigot End	B	1	1	\$166.01
865-HB12S	Debris Bucket For Vertical Out	B	1	1	\$360.35
865-HB6AINSB	Installation Aid Tool for ADA Pattern	B	1	1	\$335.51
865-HB6INSB	Installation Aid Tool	B	1	1	\$335.51

HydroLine™ System

The HydroLine™ is a unique, ultra-low-profile system designed for fast/easy installations or height-restricted applications. Rib-design channels made from ductile iron or aluminum lock into concrete slab and stand up to heavy-duty traffic.

The system is low-maintenance and perfect for covered parking areas or thresholds to prevent surface water cross-over.



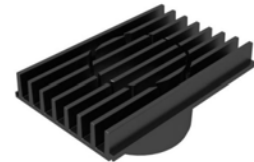


HydroLine™ System

Item Number	Item Description	Pkg Type	Min Qty	Case Qty	Price
DUCTILE IRON CHANNELS					
865-HL4L	4-1/2" Wide Channel - Corner Section, 2 Pcs	B	1	1	\$708.24
865-HL4N005BF	Half-Meter, 4-1/2" Wide Channel, Neutral w/ Out Curb End	B	1	1	\$169.08
865-HL4N005K	Half-Meter, 4-1/2" Wide Channel, Neutral w/ Curb End	B	1	1	\$181.31
865-HL4N00CSF	One-Meter, 4-1/2" Wide Channel, Neutral w/ Cleaning End	B	1	1	\$265.70
865-HL4N00F	One-Meter, 4-1/2" Wide Channel, Neutral	B	1	1	\$184.95
POWDER-COATED ALUMINUM CHANNELS					
865-HLP4AB	5" Wide Channel - Bottom Outlet Section	B	1	1	\$259.94
865-HLP4C	5" Wide Channel - Corner Section, 2 Pcs	B	1	1	\$733.71
865-HLP4N00F1M	One-Meter, 5" Wide Channel, Neutral	B	1	1	\$543.66
865-HLP4N00F3M	Three-Meter, 5" Wide Channel, Neutral	B	1	1	\$806.01
865-HLP4T	5" Wide Channel - Tee Section, 3 Pcs	B	1	1	\$1,101.74
865-HLP4X	5" Wide Channel - Cross Section, 4 Pcs	B	1	1	\$1,467.11
ACCESSORIES					
865-HLAC	One-Meter Installation Cover For Aluminum Channels	B	1	1	\$203.27
865-HLCE	Connection Element For Iron Channels	B	1	1	\$41.72
865-HLDC	One-Meter Installation Cover For Iron Channels	B	1	1	\$203.27
865-HLEC	End Wall For Iron Channels	B	1	1	\$41.72
865-HLISC	Installation Bracket For Iron Channels	B	1	1	\$41.73
865-HLPCE	Connection Element For Aluminum Channels	B	1	1	\$41.72
865-HLPEC	End Wall For Aluminum Channels	B	1	1	\$41.73
865-HLPED	Installation Pedestal For Iron Channels	B	1	1	\$219.58
865-HLPISC	Installation Bracket For Aluminum Channels	B	1	1	\$41.73
865-HLPPED	Installation Pedestal For Aluminum Channels	B	1	1	\$237.15
865-RAKE	Cleaning Rake For Iron Channels	B	1	1	\$237.15
865-RAKEP	Cleaning Rake For Aluminum Channels	B	1	1	\$280.25



865-HL4N005BF



865-HLP4AB



865-RAKE

Supply

Drainage

Support

Specialties

Appendix

DATE		
PAGE	OF	

INSTRUCTIONS

1. Fill in all Bill to and Ship to information.
2. Complete one line for each item ordered and fully extend for item total. Add all lines for order total.
3. Fax or mail page(s) to factory, representative or wholesaler.

BILL TO

new address

Qualified wholesale distributors only		
Purchase order no.		
Contact name		
Company		
Street address		
City		
State	Zip	
Phone	Fax	
Special instructions		

SHIP TO

new address

Leave blank if same as "bill to"		
Purchase order no.		
Contact name		
Company		
Street address		
City		
State	Zip	
Phone	Fax	
Special instructions		

ORDER

	Item No.	Description	Qty.	List Price Each	List Price Total	Mult.	Net Price Total
	1						
	2						
	3						
	4						
	5						
	6						
	7						
	8						
	9						
	10						
	11						
	12						
	13						
	14						
	15						
Signature / Date			Order Totals				

www.siouxchief.com

14940 Thunderbird Road
 Kansas City, MO 64147
P 1.800.821.3944
F 1.800.758.5950



Company	Territory	Phone	Website
1 Badgerland Trading Company	WI	(262) 827-3177	badgerlandtrading.com
2 Bulls-I Sales	IA, NE	(913) 649-8391	bullsisales.com
3 Burns Cope Associates	Northern DE, NJ, Eastern PA, New York Metro Area	(610) 485-2828	burnscope.com
4 C R G International Corp	Puerto Rico	(787) 796-2999	josereliablesales@gmail.com
5 Can-Aqua International	Quebec	(450) 625-3088	can-aqua.ca
6 Can-Aqua International	Saskatchewan Manitoba	(306) 501-4295 (204) 292-9749	can-aqua.ca
7 Cardinal Sales	Ontario	(905) 569-1419	cardinalsales.ca
8 Carolina Sales Associates	NC, SC	(803) 831-7227	csareps.com
9 Cathell & Associates	Southern DE, DC, MD, VA, WV	(571) 313-1390	cathell.com
10 Champions Marketing	TX, LA	(972) 602-0200	championsmarketing.com
11 Double A Sales Southwest	Arizona	(602) 359-9907	doubleasales.com
12 Exceptional Product Sales	MI	(586) 286-3240	eps.michigan@sbcglobal.net
13 Gordon & Associates	AK, WA, OR, HI	(360) 566-1470	gordonandassoc.com
14 Hart, Travers & Associates	IL	(800) 535-8525	htareps.com
15 Hy-Line Sales	British Columbia	(778) 657-6431	hylinesales.com
16 Lowder Sales	OH, KY	(800) 221-5650	lsireps.com
17 M R & Associates	Eastern MO & Southern IL	(314) 962-8960	mrassocinc.com
18 McKee-Nix & Associates	GA, TN	(770) 934-8061	mckeenix.com
19 Mountain West Marketing	UT, ID	(801) 782-0100	mtnwm.com
20 Northland Reps	ND, SD, MN	(952) 854-3905	northlandreps.com
21 NSC Marketing	OK, AR	(405) 602-2800	nscok.com
22 Paramount Sales	Northern CA, NV	(925) 373-0817	paramountsales.biz
23 RSL Sales Associates	FL	(800) 538-4792	rlsales.com
24 SFE Enterprises	KS, MO	(816) 322-2206	sfeenterprises.com
25 Shoreline Mechanical Sales	Atlantic Canada	(902) 455-2939	shorelinemechanical.ca
26 Signature Sales	Southern CA, Las Vegas, NV	(951) 549-1000	signaturesalesinc.com
27 Spectrum Sales	Alberta	(403) 255-8332	spectrumsales.ca
28 T M Sales	MT, WY, CO, Western NE	(303) 375-1515	tmsalesinc.com
29 Tim Morales & Associates	AL, MS, TN, FL panhandle	(251) 602-8333	timmorales.com
30 TOP Marketing	Indiana	(317) 575-9267	topmktg.com
31 Triumph Sales	Western PA, WV	(412) 781-0950	triumphsalesinc.com
32 Twin "D" Associates	NY	(800) 522-3523	twindassociates.com
33 W W Sales Company	NM, El Paso, TX	(505) 878-0636	wwsalesco.com
34 Walter F Morris Company	New England	(800) 888-1922	morrismerchants.com

General Reference

Supply

- 1 cubic ft of water weighs 62.41 lbs.
- 1 cubic meter of water weighs 100 kg.
- 1 gallon (US) of water weighs 8.335 lbs.
- 1 liter of water weighs 1 kg.

Copper water tube and copper sweat fittings are referenced by their nominal (nom) size, which approximates the inside diameter (I.D.) waterway of the tube (1/2" nom, 3/4" nom, etc.).

Drainage

Compression fittings are referenced by the outside diameter (O.D.) of the tube they connect to (5/8" O.D., 7/8" O.D., etc.).

Copper water tube is manufactured in accordance with ASTM Standard B 88.

Support

Nominal Tube Size	Outside Diameter	Min. Wall Thickness	Weight Empty (lbs/ft)	Weight Full of Water (lbs/ft)
SCHEDULE 40 STEEL				
1/8"	0.405"	0.068"	0.2	0.4
1/4"	0.540"	0.088"	0.4	0.5
3/8"	0.675"	0.091"	0.6	0.7
1/2"	0.840"	0.109"	0.8	0.9
3/4"	1.050"	0.113"	1.1	1.3
1"	1.315"	0.133"	1.7	2.1
1 1/4"	1.660"	0.140"	2.3	2.9
1 1/2"	1.900"	0.145"	2.7	3.6
2"	2.375"	0.154"	3.6	5.0
2 1/2"	2.875"	0.203"	5.8	7.9
3"	3.500"	0.216"	7.6	10.8
3 1/2"	4.000"	0.226"	9.1	13.4
4"	4.500"	0.237"	10.8	16.3
SCHEDULE 40 PVC				
1/8"	0.405"	0.068"	0.04	0.06
1/4"	0.540"	0.088"	0.07	0.11
3/8"	0.675"	0.091"	0.10	0.18
1/2"	0.840"	0.109"	0.15	0.25
3/4"	1.050"	0.113"	0.20	0.40
1"	1.315"	0.133"	0.30	0.70
1 1/4"	1.660"	0.140"	0.40	1.00
1 1/2"	1.900"	0.145"	0.50	1.40
2"	2.375"	0.154"	0.60	2.00
2 1/2"	2.875"	0.230"	1.00	3.10
3"	3.500"	0.216"	1.30	4.50
3 1/2"	4.000"	0.226"	1.60	5.90
4"	4.500"	0.237"	1.90	7.40
SCHEDULE 40 CPVC				
1/4"	0.540"	0.088"	0.09	0.12
1/2"	0.840"	0.109"	0.19	0.28
3/4"	1.050"	0.113"	0.25	0.43
1"	1.315"	0.133"	0.38	0.76
1 1/4"	1.660"	0.140"	0.51	1.08
1 1/2"	1.900"	0.145"	0.61	1.49
2"	2.375"	0.154"	0.82	2.12
2 1/2"	2.875"	0.230"	1.29	3.29
3"	3.500"	0.216"	1.69	4.75
4"	4.500"	0.237"	2.33	7.68

Specialties

Appendix

Nominal Tube Size	Outside Diameter	Min. Wall Thickness	Weight Empty (lbs/ft)	Weight Full of Water (lbs/ft)
SCHEDULE 80 STEEL				
1/8"	0.405"	0.095"	0.3	0.4
1/4"	0.540"	0.119"	0.5	0.6
3/8"	0.675"	0.126"	0.7	0.8
1/2"	0.840"	0.147"	1.1	1.2
3/4"	1.050"	0.154"	1.5	1.7
1"	1.315"	0.179"	2.2	2.5
1 1/4"	1.660"	0.191"	3.0	3.5
1 1/2"	1.900"	0.200"	3.6	4.3
2"	2.375"	0.218"	5.0	6.3
2 1/2"	2.875"	0.276"	7.6	9.4
3"	3.500"	0.300"	10.2	13.0
3 1/2"	4.000"	0.318"	12.5	16.3
4"	4.500"	0.337"	15.0	20.0
SCHEDULE 80 POLYPRO				
1/2"	0.840"	0.147"	0.14	0.19
3/4"	1.050"	0.154"	0.19	0.33
1"	1.315"	0.179"	0.27	0.49
1 1/4"	1.660"	0.191"	0.38	0.85
1 1/2"	1.900"	0.200"	0.45	1.18
2"	2.375"	0.218"	0.62	1.61
SCHEDULE 80 PVC				
1/8"	0.405"	0.095"	0.05	0.06
1/4"	0.540"	0.119"	0.09	0.12
3/8"	0.675"	0.126"	0.10	0.16
1/2"	0.840"	0.147"	0.10	0.20
3/4"	1.050"	0.154"	0.20	0.40
1"	1.315"	0.179"	0.40	0.70
1 1/4"	1.660"	0.191"	0.50	1.00
1 1/2"	1.900"	0.200"	0.60	1.30
2"	2.375"	0.218"	0.90	2.20
2 1/2"	2.875"	0.276"	1.30	3.10
3"	3.500"	0.300"	1.80	4.60
3 1/2"	4.000"	0.318"	2.20	6.00
4"	4.500"	0.337"	2.60	7.60
SCHEDULE 80 CPVC				
1/4"	0.540"	0.119"	0.12	0.16
1/2"	0.840"	0.147"	0.24	0.31
3/4"	1.050"	0.154"	0.33	0.48
1"	1.315"	0.179"	0.49	0.85
1 1/4"	1.660"	0.191"	0.67	1.18
1 1/2"	1.900"	0.200"	0.81	1.61
2"	2.375"	0.218"	1.09	2.26
2 1/2"	2.875"	0.276"	1.65	3.49
3"	3.500"	0.300"	2.21	5.02
4"	4.500"	0.337"	3.23	8.08
CTS CPVC (SDR 11)				
1/2"	0.625"	0.060"	0.08	0.16
3/4"	0.875"	0.080"	0.14	0.31
1"	1.125"	0.102"	0.22	0.51
1 1/4"	1.375"	0.125"	0.33	0.76
1 1/2"	1.625"	0.148"	0.47	1.07
2"	2.125"	0.193"	0.80	1.83

Nominal Tube Size	Outside Diameter	Min. Wall Thickness	Weight Empty (lbs/ft)	Weight Full of Water (lbs/ft)
COPPER TYPE K				
3/8"	0.500"	0.049"	0.27	0.32
1/2"	0.625"	0.049"	0.34	0.43
5/8"	0.750"	0.049"	0.42	0.56
3/4"	0.875"	0.065"	0.64	0.83
1"	1.125"	0.065"	0.84	1.18
1 1/4"	1.375"	0.065"	1.04	1.57
1 1/2"	1.625"	0.072"	1.36	2.10
2"	2.125"	0.083"	2.06	3.37
2 1/2"	2.625"	0.095"	2.92	4.92
3"	3.125"	0.109"	4.00	6.96
3 1/2"	3.625"	0.120"	5.12	9.02
4"	4.125"	0.134"	6.51	11.57
COPPER TYPE L				
3/8"	0.500"	0.035"	0.20	0.26
1/2"	0.625"	0.040"	0.28	0.38
5/8"	0.750"	0.042"	0.36	0.51
3/4"	0.875"	0.045"	0.45	0.66
1"	1.125"	0.050"	0.65	1.01
1 1/4"	1.375"	0.055"	0.88	1.42
1 1/2"	1.625"	0.060"	1.14	1.91
2"	2.125"	0.070"	1.75	3.09
2 1/2"	2.625"	0.080"	2.48	4.54
3"	3.125"	0.090"	3.33	6.28
3 1/2"	3.625"	0.100"	4.29	8.28
4"	4.125"	0.110"	5.38	10.57
COPPER TYPE M				
1/2"	0.625"	0.028"	0.204	0.314
3/4"	0.875"	0.032"	0.328	0.551
1"	1.125"	0.035"	0.465	0.843
1 1/4"	1.375"	0.042"	0.682	1.25
1 1/2"	1.625"	0.049"	0.940	1.73
2"	2.125"	0.058"	1.460	2.83
2 1/2"	2.625"	0.065"	2.030	4.14
3"	3.125"	0.072"	2.680	5.70
3 1/2"	3.625"	0.083"	3.580	7.64
4"	4.125"	0.095"	4.660	9.83
COPPER TYPE DWV				
1 1/4"	1.375"	0.040"	0.65	1.22
1 1/2"	1.625"	0.042"	0.81	1.62
2"	2.125"	0.042"	1.07	2.48
3"	3.125"	0.045"	1.69	4.81
4"	4.125"	0.058"	2.87	7.88
CAST IRON EXTRA HEAVY				
2"	2.38"	0.190"	5.0	6.6
3"	3.50"	0.250"	9.0	12.7
4"	4.50"	0.250"	12.0	18.5
CAST IRON SERVICE WEIGHT				
2"	2.25"	0.17"	4	5.5
3"	3.25"	0.17"	6	9.4
4"	4.25"	0.18"	8	14.2
NO-HUB CAST IRON				
1 1/2"	1.90"	0.16"	2.7	6.2
2"	2.35"	0.16"	3.6	8.6
3"	3.35"	0.16"	5.2	13.5
4"	4.38"	0.19"	7.4	20.2

Pipe Support Requirements

Data from 2021 International Plumbing Code, Table 308.5

Piping Material	Maximum Horizontal Spacing (ft)	Maximum Vertical Spacing (ft)
ABS pipe	4	10 ^B
Aluminum tubing	10	15
Brass pipe	10	10
Cast iron pipe	5 ^A	15
CPVC pipe or tubing, ≤ 1"	3	10 ^B
CPVC pipe or tubing, ≥ 1 1/4"	4	10 ^B
Copper or copper-alloy pipe	12	10
Copper or copper alloy tubing ≤ 1 1/4" diameter	6	10
Copper or copper alloy tubing ≥ 1 1/2" diameter	10	10
PEX pipe, ≤ 1"	2.67 (32")	10 ^B
PEX pipe, ≥ 1 1/4"	4	10 ^B
PEX-AL-PEX pipe	2.67 (32")	4
Lead pipe	Continuous	4
PE-AL-PE pipe	2.67 (32")	4
PE-RT pipe, ≤ 1"	2.67 (32")	10 ^B
PE-RT pipe, ≥ 1 1/4"	4	10 ^B
PP pipe or tubing, ≤ 1"	2.67 (32")	10 ^B
PP pipe or tubing, ≥ 1 1/4"	4	10 ^B
PVC pipe	4	10 ^B
Stainless steel drainage systems	10	10 ^B
Steel pipe	12	15

A: The maximum horizontal spacing of cast iron pipe hangers shall be increased to 10 ft where 10-ft lengths of pipe are installed
 B: For sizes 2" and smaller, a guide shall be installed midway between required vertical supports. Such guides shall prevent pipe movement in a direction perpendicular to the axis of the pipe

Labor Cost Chart

Dollars earned when you save time using Sioux Chief products.

Rate	Time	2 min.	5 min.	10 min.	15 min.	20 min.
\$20.00/hr		\$0.66	\$1.67	\$3.33	\$5.00	\$6.67
\$25.00/hr		\$0.83	\$2.08	\$4.17	\$6.25	\$8.33
\$30.00/hr		\$1.00	\$2.50	\$5.00	\$7.50	\$10.00
\$35.00/hr		\$1.17	\$2.92	\$5.83	\$8.75	\$11.67
\$40.00/hr		\$1.33	\$3.33	\$6.67	\$10.00	\$13.33
\$45.00/hr		\$1.50	\$3.75	\$7.50	\$11.25	\$15.00
\$50.00/hr		\$1.67	\$4.17	\$8.33	\$12.50	\$16.67
\$55.00/hr		\$1.83	\$4.58	\$9.17	\$13.75	\$18.33
\$60.00/hr		\$2.00	\$5.00	\$10.00	\$15.00	\$20.00
\$65.00/hr		\$2.17	\$5.42	\$10.83	\$16.25	\$21.67
\$70.00/hr		\$2.33	\$5.83	\$11.67	\$17.50	\$23.33
\$75.00/hr		\$2.50	\$6.25	\$12.50	\$18.75	\$25.00

Sioux Chief Manufacturing

▶▶ Limited Lifetime Warranty

Supply

Drainage

Support

Specialties

Appendix

Warranty

Sioux Chief Mfg. Co., Inc. ("Seller" or "the Seller") warrants its products to be free from defects in material and workmanship under normal usage for the lifetime of the plumbing system in which they were originally incorporated. In the event of such defects within the warranty period, the Company will, at its option, replace or recondition the product without charge. This remedy shall be effective only if the product was installed in accordance with supplied instructions, common installation or use practices and existing building and plumbing codes and legal requirements; has not been subjected to misuse or abuse; was at all times used in a manner consistent with its intended use; was at all times used in installations and environments acceptable to its material and design specifications; or any express conditions or requirements laid out in company installation instructions, manuals, tech bulletins, special labeling, precautions, as well as other instructional documents and product limitations of use; was never modified, altered or repaired by anyone other than the Seller; was properly subjected to and passed common testing methods (including pressure testing for potable water and drainage systems) immediately after the product's installation and before the product is put into service, was not damaged by freezing temperatures or excessive heats outside normal working or any express working range of the product; was not subjected to or exposed to direct or indirect chemical exposures; was not subjected to corrosion from atmospheric or environmental degradation (including UV exposure, brackish water, acidic water (pH <6.5), alkaline water (pH >8), contaminated soils, etc.), and was protected from natural causes; was never subjected to improper protection during installation and was handled with all precautions expressly written within company limitation documents or known to the industry; was not subjected to water pressures and flow conditions outside the working limits of the product; was not subject to adverse or aggressive water conditions (during testing, through stagnation or within service life (where service-life is defined by this warranty)) and where any express water condition included within company documents is avoided; and all handling was performed in a manner consistent and known to the industry or taught through company documents, labels, websites, manuals, etc. In addition, Seller shall not be responsible for any incidental, special or consequential damages, including without limitation, lost profits or the cost of repairing or replacing other property which is damaged, other costs resulting from labor charges, delays, vandalism, negligence, fouling caused by foreign material, chemical or any other circumstances over which the Seller has no control. This warranty excludes all costs arising from routine maintenance, including the replacement of any parts required by such maintenance and the replacement of parts required by normal wear and tear. The Seller also reserves the right to modify, alter or improve its product, or parts thereof, at any time without incurring an obligation to notify or modify, alter, improve or replace any product, or parts thereof, previously sold. If, on any occasion, Seller waives any term or condition, this waiver is not to be construed as a continuing waiver. For the purposes of this warranty, the lifetime of the original plumbing system is defined as the lesser of 25 years or the time before the plumbing system was replaced or materially changed; all products with automatically or manually moving parts are excluded from the limited lifetime warranty and carry a 3-year limited warranty, subject to the remaining terms, conditions and limitations of the warranty. Some States do not allow or have other parameters governing limitations on how long an implied warranty lasts, and some States do not allow the exclusion or limitation of incidental or consequential damages. This Limited Warranty gives you specific legal rights, and you may have other rights that vary from State to State. You should consult applicable state laws to determine your rights. THE WARRANTY SET FORTH HEREIN ABOVE AND BELOW IS GIVEN EXPRESSLY AND IS THE ONLY WARRANTY GIVEN BY THE COMPANY WITH RESPECT TO THE PRODUCT. THE COMPANY MAKES NO OTHER WARRANTIES, EXPRESS OR IMPLIED. THE COMPANY HEREBY SPECIFICALLY DISCLAIMS ALL OTHER WARRANTIES, EXPRESS OR IMPLIED, INCLUDING BUT NOT LIMITED TO THE IMPLIED WARRANTIES OF MERCHANTABILITY AND FITNESS FOR A PARTICULAR PURPOSE.

Terms & Conditions

All sales are subject to the Standard Terms and Conditions set forth on Sioux Chief's website at www.siouxchief.com. These terms include the following:

Return Merchandise

No merchandise can be returned without Seller's prior written authorization. All returns must comply with the guidelines established below.

Return Merchandise & Warranty Service

In order to return product/merchandise or receive warranty service, Buyer must first obtain a Return Merchandise Authorization ("RMA") by contacting Seller using the following information:

MAIL: Customer Service Manager
Sioux Chief Manufacturing Company, Inc.
14940 Thunderbird Road
Kansas City, Missouri 64147
PHONE: 816-425-9900 / 1-800-821-3944
FAX: 816-348-7502 / 1-800-758-5950
EMAIL: info@siouxchief.com

Return Merchandise Procedure

All merchandise returns and warranty claims are subject to the following general terms and conditions:

RMA requests must reference Seller's order number, invoice number or the customer's P.O. number.

Minimum return amount must be \$250 net value per purchase order.

Product returns can only be made within twelve (12) months of the original invoice date of the product to Buyer.

Seller reserves the right, at its sole and absolute discretion, to reject an RMA request for any reason at any time.

In order to be received and accepted by Seller, all returned product must be in whole multiples of the Minimum Quantity listed in the current Price Index and material must be in its original packaging with manufacturer's seal intact.

Products which are being phased-out, are obsolete, or were special-order (custom) are not considered normal stock. These items are non-returnable and non-refundable, except in the case of a manufacturer's defect.

Buyer will be charged 25% of the applicable return price for product restocking. For Drainage items having one or more listed option, Buyer will be charged 33% of the applicable return price for product restocking, and will apply to canceled orders that have been entered but not shipped.

An RMA is invalid 90 days after its date of issue.

Seller will only supply product credit for a product return or warranty claim. Issuance of an RMA does not authorize the Buyer to deduct the value of the returned item; once product is received and accepted by Seller, Seller will issue a credit memo for the returned product when applicable.

All product returns are subject to inspection and acceptance by Seller at its discretion.

Seller reserves the right to deny, nullify or cancel an RMA at its discretion.

Product returned without a Return Merchandise Authorization number will be destroyed without credit.

Seller shall not be responsible for shipping errors and shortages reported 5 days after receipt of material.

Seller shall not be responsible for shipment shortages that are signed for as clear. Any shipment that appears to be damaged in shipping must be noted when signing for receipt of delivery.

Full Freight Allowance

Sioux Chief will pay freight on all orders to single destinations totaling at least \$4,000 Net to locations within the 48 contiguous states (United States of America), at least \$7,500 Net to locations within Hawaii, Alaska, and Puerto Rico, and at least \$3,500 CAD Net to locations within Canada. Sioux Chief will pay freight on HydroTec™ and HydroBlock™ trench drain orders of at least \$5,000 Net to locations with the 48 contiguous states.

Warranty Procedure - Product & Property

All claims for property or other damage are subject to the following additional terms and procedure:

If there is a warranty claim on a part that involves property or other damage, Seller should be contacted by phone or in writing directly following the loss, and in no case later than 15 days of the date of alleged claim or failure and before any remediation or alteration of the loss site has been started; any notice beyond this time frame or after work has taken place to repair or change the loss site will materially affect the Seller's ability to adjudicate the claim and will void the warranty.

The product in claim and/or its installation should not be modified before review by Seller; alteration of the alleged product or installation materially affects the Seller's ability to establish fault and voids the warranty.

Request a claim form. Submit the completed form to the Seller. Claimant will receive an INC (incident) number from Seller.

With the INC number, claimant should submit the claim form, including the date of the installation, description of problem, damage, pictures of the product, and repair invoices. This information should be sent to the above address at claimant's expense. Seller will not receive or process a claim without an INC number.

Seller will contact claimant with next steps, which may include a visit from a site investigator or other representatives of Seller, as Seller reserves the right to investigate all alleged loss sites.

Processing of Orders

All orders are processed immediately upon receipt and acceptance by Seller. Seller reserves the right to charge back to Buyer costs incurred from order cancellations or changes, and to consider additions as separate orders.

Unless provided in writing by Seller, any dates and/or times quoted by Seller for the delivery of any goods or the performance of any services are estimates and Seller will not be held responsible for any delay. Buyer's receipt of goods or acceptance of services shall constitute a waiver of any claim for delay.

If Buyer requires expedited shipment of "in stock" goods prior to stated lead times on said order, Buyer will be charged \$100.00 (USD) for any 'expedited' shipping on items up to \$1,000.00 (USD) net, and \$100.00 (USD) + 2% of net for any 'expedited' shipping on items over \$1,000.00 (USD) net.

Price Changes

All prices quoted from time to time by Seller are subject to change without notice up to time of shipment. Invoice totals and discounts will be calculated out to the sixth decimal digit.

If Buyer fails to give written notice of objection to Sioux Chief's order confirmation within ten (10) days after Buyer's receipt of Sioux Chief's confirmation of the purchase order, the order confirmation pricing becomes binding.

Minimum Order Quantities

A 20% surcharge will be applied to any item not purchased in multiples of the stated Minimum Quantity, except on drop-ship orders.

Items with bold Minimum Quantities in the Numerical Index (back of catalog) can never be broken.

PEX tube bundles (sticks) may only be included on orders of \$40,000 Net or more. In addition, PEX tube bundles (sticks) must also be ordered in a minimum quantity of ten (10) or a \$100 surcharge will apply to the line item. Coils may be ordered in any quantity, and on orders of any amount.



TAKE THE FIELD.

Sioux Chief Manufacturing Company, Inc.

14940 Thunderbird Road

Kansas City, Missouri 64147

P 1-800-821-3944 | 816-425-9900

F 1-800-758-5950 | 816-348-7502

www.siouxchief.com

© 2022 Sioux Chief Manufacturing Company Inc.

Online Pricing Guide

Check up-to-date list prices anytime



<https://products.siouxchief.com>